

Neda Massoudifar
Neda Massoudifar
Designer Portfolio



Hello my name is
Neda Massoudifar
I am a 2D & 3D designer

neda.massoudifar@mail-edc.com
+33 605961231
Instagram.com/nedaden <https://www.linkedin.com/in/neda-massoudifar-58b5a7a0/>
<https://www.behance.net/nedamassou51f9>
Nice,France

ABOUT ME

Born in Tehran,I moved to France to continue my studies in Industrial Design.I have always been passionate about French art and design. I am motivated and organized,who demonstrates flexibility and responsibility through working in group projects as well as working on my own

LANGUAGES

Farsi native
English Advanced
French Advanced
Italian intermediate
Spanish beginner
German beginner
Swedish beginner

INTERESTS

UI & UX
product design
Sustainable development
New material research
Art Design
Culture

EDUCATION

2000-2004 Bachelor in Industrial Management
Tehran
2015-2020 Bachelor in Product Design, Nice, France
2020-2022 Master in Sustainable Design and New
Materials,Ecole de Condé Nice
2022_2024 Master in interior Architecture
2022 Google UX design Certified

EXPERIENCES

2007 Quality manager in Nahalsan Co
2014 Started my own furniture brand PARAX
2015 Internship Bang and Olufsen Nice
2018_2020 Internship Kamil Gallery, Monaco

DIGITAL TOOLS

Adobe Photoshop
Archicad,Sketchup,Autocad
Adobe XD, FIGMA
Adobe Indesign
Keyshot
Sketchbook
Rhinoceros
Light Room
Prototyping

Design is not just an act of creation, it is an act of contribution to demonstrate
the pertinence of creativity to re-imagine a better world

Industrial Design Projects

- 1.BIBIDI BABUDI BOO
The child Sit
- 2.Blooming Light
The lighting
- 3.coffeecup
- 4.Chespresso
- The Coffee break
- 5.Mergency
- The deployable structure

Architectural Design Projects

- 1.PRIMA 1
- 2.PRIMA
- 3.Writers Shelter
- 4.Molinar Perfumerie
- 5.PopUp store Cap3000
Project Cosmic
- 6.Fort Mont Alban

Sustainable Design Projects

- 1.Fresh Fruit Market waste
management
- 2.Recycling Guide
A cover which helps to
recycle better
- 3.MINIMAOUSSE
A cabin detached from
the world
- 4.Sound POLLUTION
Module
- 5.Play Ground

Projet UX/UI

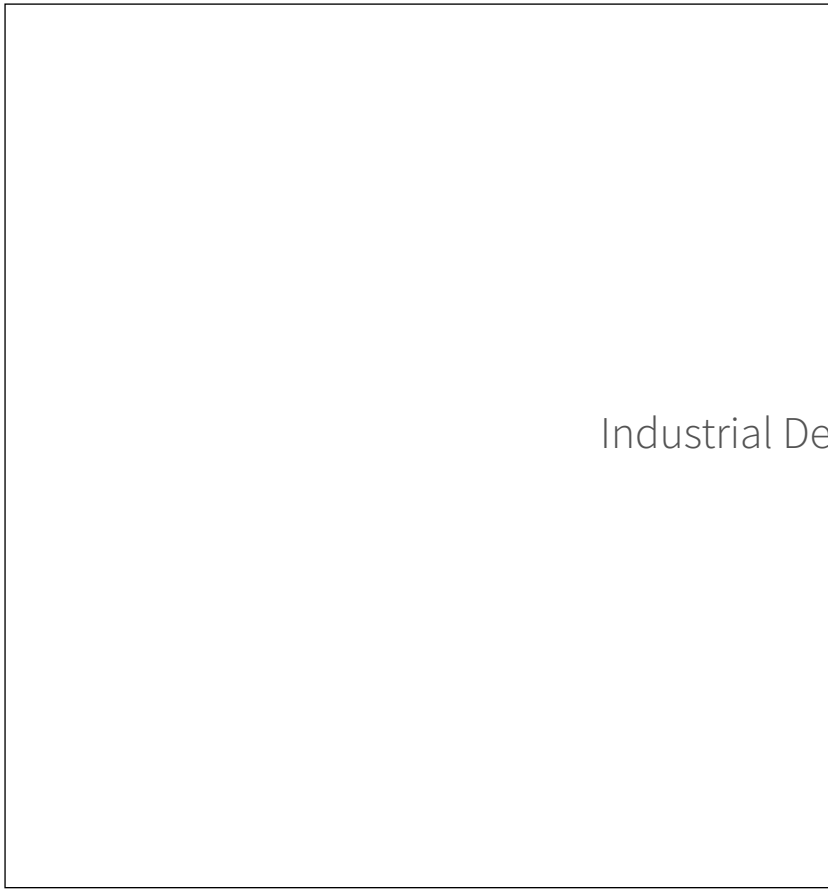
- 1.Bakery application
- 2.Vintage dressing App
- 3.outdoor Furniture App
- 4.Graphc Design

New Materials

- 1.Oystershell based
Beton
- 2.Pinosine
- 3.Pine Based Ink
- 4.Biomaterial Extruder

Projets Personel

- 1.Nahalsan
- 2.experimentation
- 3.Paintings
- 4.Pattern



Industrial Design Projects

Bibidi Baboodi Boo

child seat

This Seat is made for children from 1 to 8 years old ,it is made of cork a natural material ;and the purpose is to collect all the water bottle caps and different sorts of polymer in kindergartens.

MATERIAL

Cork
Plexiglass
Paper

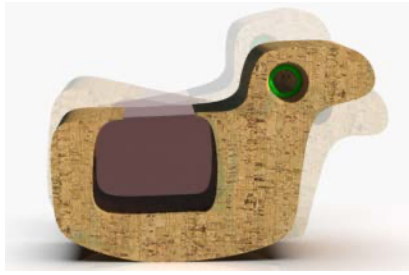
TEAM

Neda Massoudifar
Lea Omez
Objectif Zero Waste

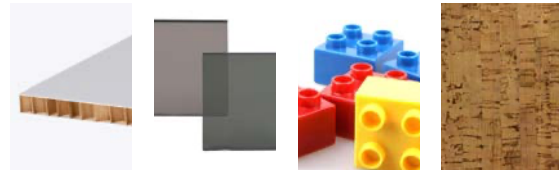
My work

Renders
Sketches





There are five different chairs which the kids will feed by putting all the plastic parts which they use in their daily life .
 The color will be the original color of the cork which is covered by a water resistant material so they could be used outdoors and indoors.



SAFE & DURABLE
 safe and funny way to teach children to recycle different materials , they will feed the animals with plastic which they use as packaging in daily life.

SAFE & DURABLE
 safe and funny way to teach child recycle different material , they will feed the animals with plastic which they use as packaging in daily life.





BLOOMINGLIGHT

Transform your room in a second

BLOOMINGLIGHT is a lamp that makes of a kinetic structure to change the direction and brightness of light

MATERIAL

Wood
Aluminium

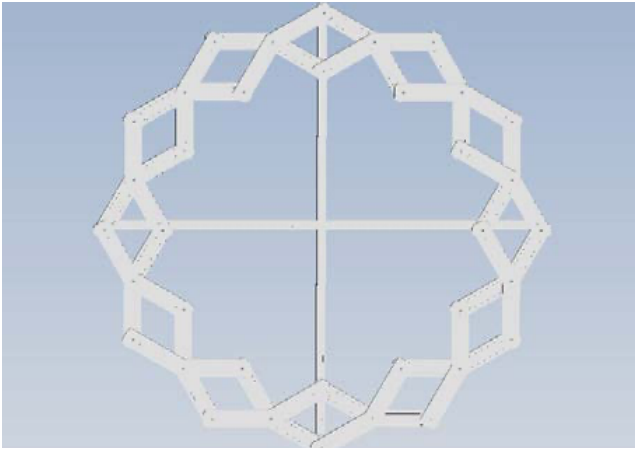
TEAM

Melisa Massena
Neda Massoudifar

MY WORK

3D model
prototyping





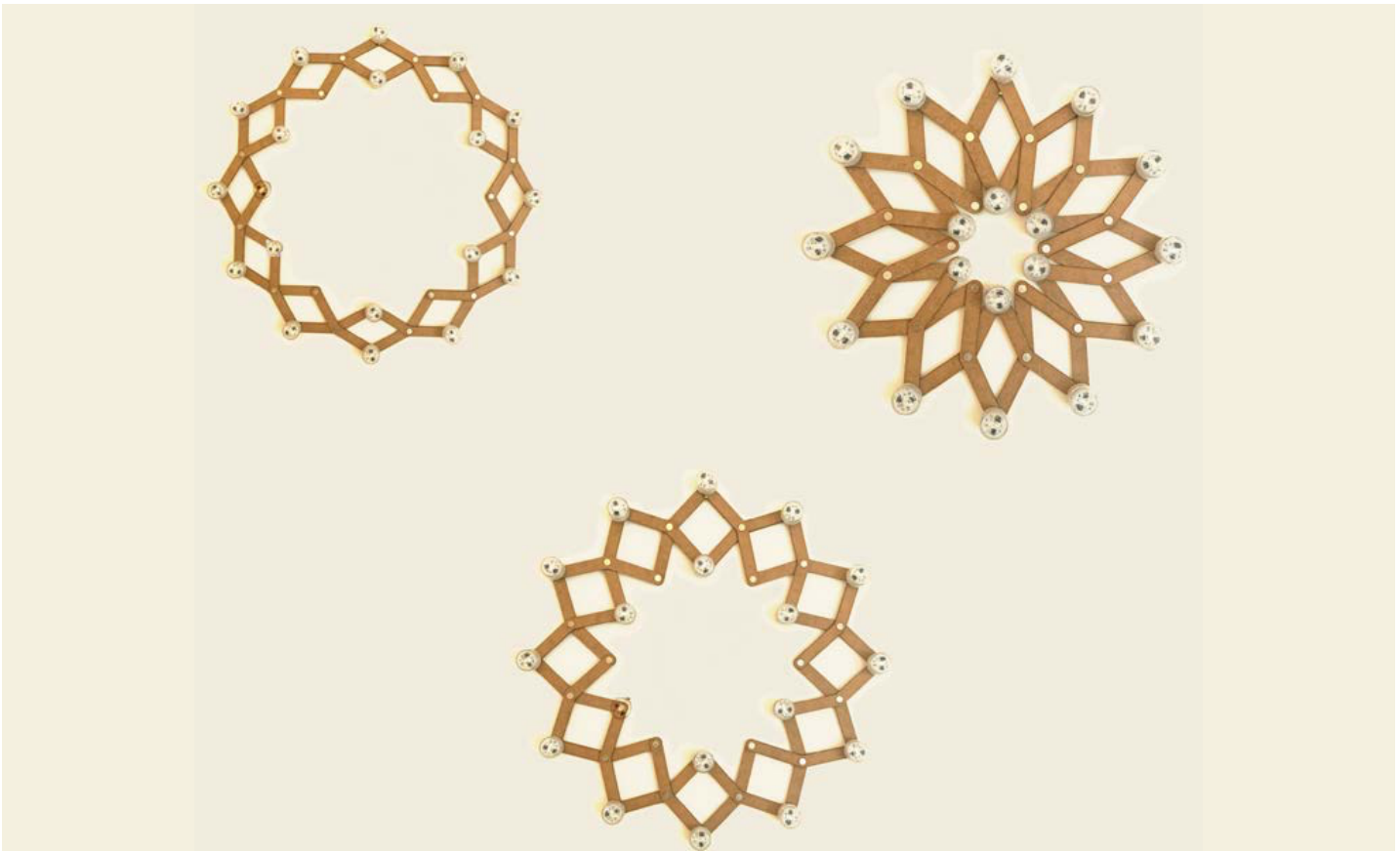
HOW Inspired by nature, the idea was born to create a functional lamp that also generates kinetic motion.

WHY The aim was to develop a lamp for versatile applications, which can nevertheless be produced at low cost. Therefore, expensive special parts were avoided and mainly semi-finished products were used.



BRIEF

The challenge was electricity current through the structure so we designed a creative bar that can transmit the electricity through the endpoints



IDEATION

BLOOMINGLIGHT light up the room in different ways either you need to have spotlight or a spread light

Espresso

Travel within an espresso cup

espresso set with an organic form which inspired of the whole living world around the coffee beans in south america

MATERIAL
ceramic

TEAM

Neda Massoudifar

MY WORK
3D model
prototyping





The first thing to do when we want to connect to our creativity and take out our sensors, to become aware of the richness of the world around us to connect to it. Smell, touch, taste, sight, hearing and even a sixth sense, intuition. For each of our acts, we must never forget that as a human being, we understand the world through our senses. Our body keeps recording everything: temperature, pressure, wind, light, taste, and so on, and all at the same time.

It reveals the close relationship that the designer maintains with materials and techniques, as well as his visionary representation of how an object is used.



The transitional object represents a character of intermediation between his internal and external world.

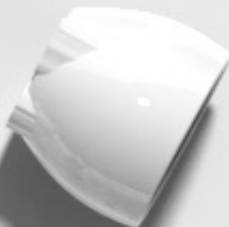
The value, meaning, user experience, accessibility, personal, and tactile led to the identification of relevant methods of research involved in the design project

The first section describes industrially produced ceramic objects that were used as a source of inspiration because they were felt to provide the meaningful experiences hoped for in the case study.

The second section describes an explorative investigation into user attachment to ceramic objects.

Each of the pieces consists of two parts shaped separately to create two patterns of material. These patterns the smooth white of the enamel give an extra dimension when the light is there. the details on its shoulder, surprising by their contemporary and minimal forms, are repeated in a geometric and irregular manner developed a most atypical relief.





Chespresso

spice up the coffee break at work

the moduls which change the nespresso capsules into a chess game board

MATERIAL

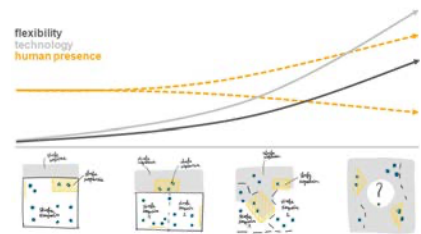
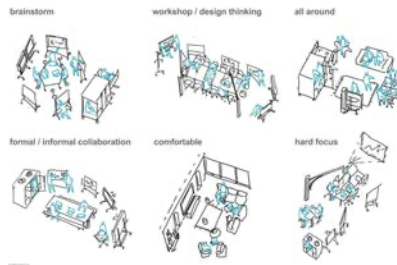
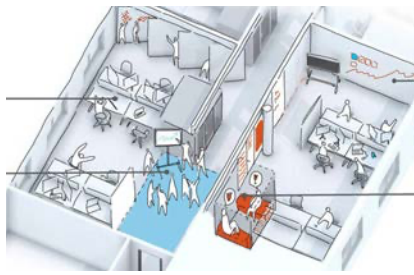
Aluminium
PlexiGlass

TEAM

Neda Massoudifar

MY WORK

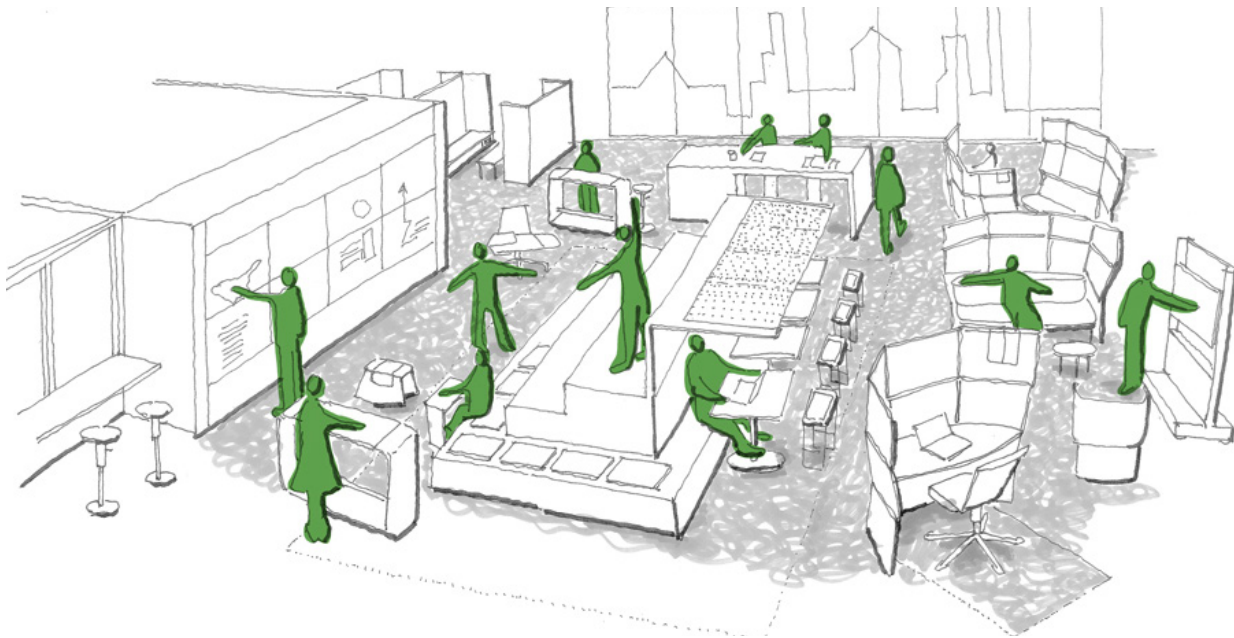
3D model
prototyping



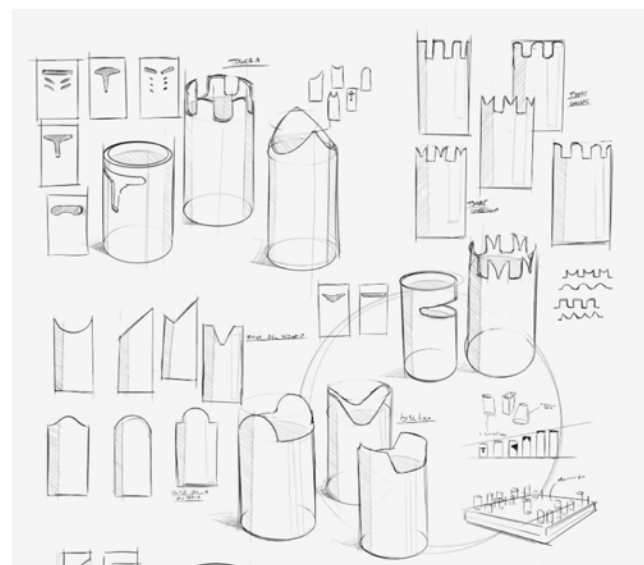
CONCEPT

We have learned that sometimes the creative zone and the Coffee Break zone both tend to be closed to each other so we create an interactive games for the people who either wants to be more creative or who wants to have breakflexible and mobile

Taking a coffee is always a good Idea.



the chesspresso is 32 different modules which will be integrated on the nespresso capsules and become a chess game together .
the box , it could be used as a capsule dispenser as well as a chess board.



M Rgency

deployable structure

deployable structure which can be used by the Sappers in bad weather to protect the injured person

MATERIAL

Recycled PET /Aluminum

TEAM

Neda Massoudifar

Melisa Massena

MY WORK

3D model

prototyping



BRIEF-INNOVATIVE TENT

Afoldable tent Inspired by the principle of kinetic system

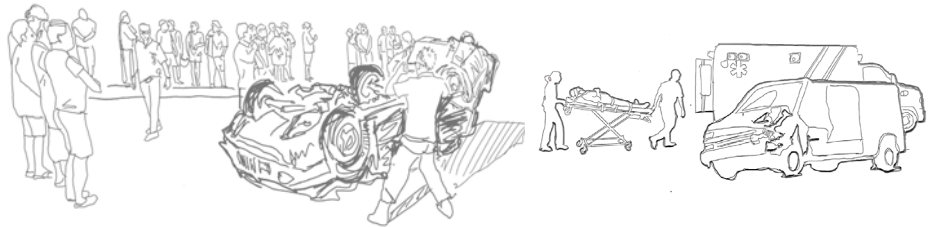
CONCEPT

after doing researches about different types of scenarios?we understood that injured person ,they suffer more in staying under rain or direct sunlight

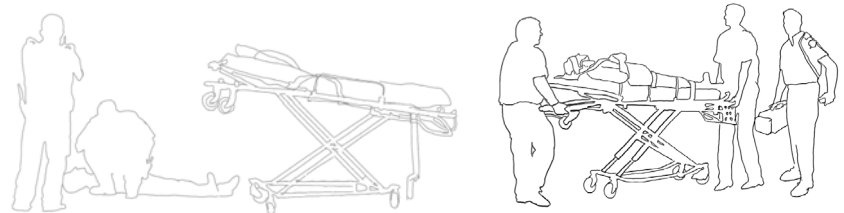


scenarios

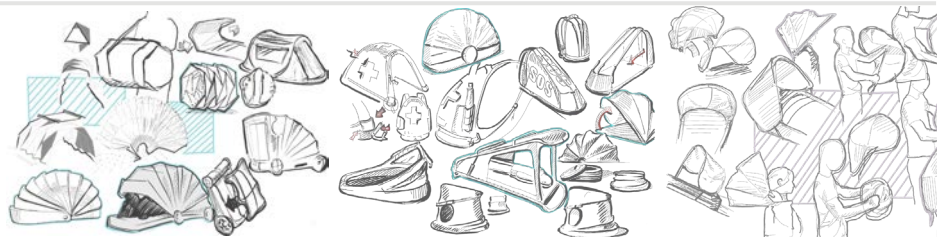
Hide the accident scene
?made more comfort for
the caregivers and injured
ones

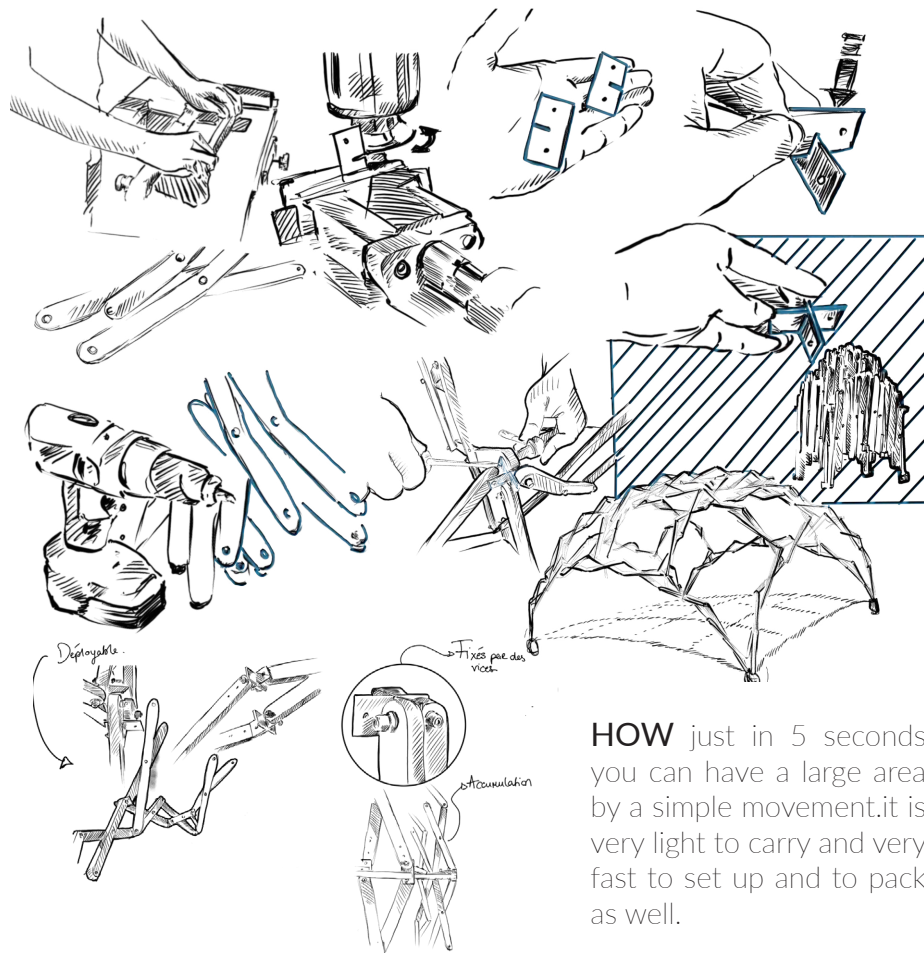
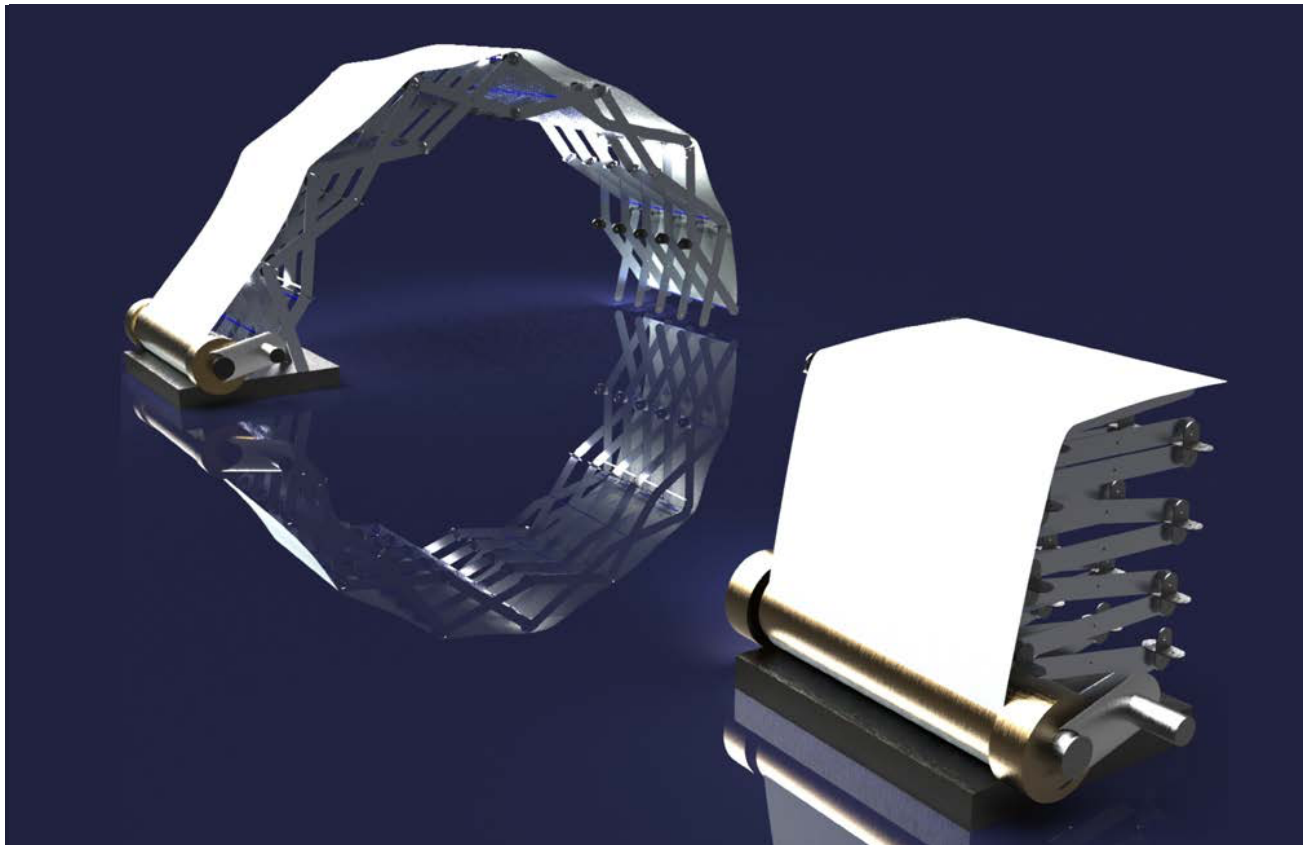


save the victim of rain
or direct sunlight

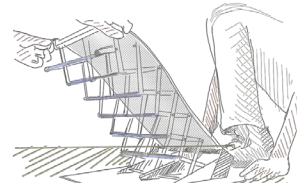
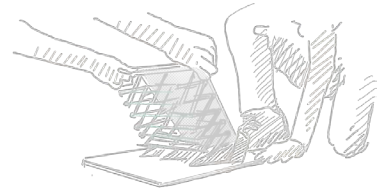
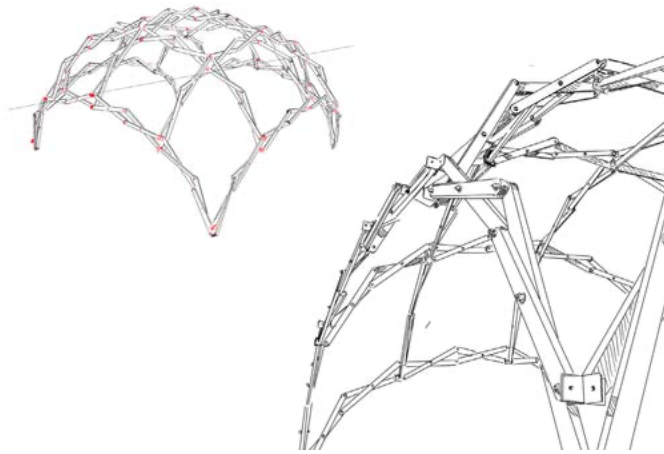


research





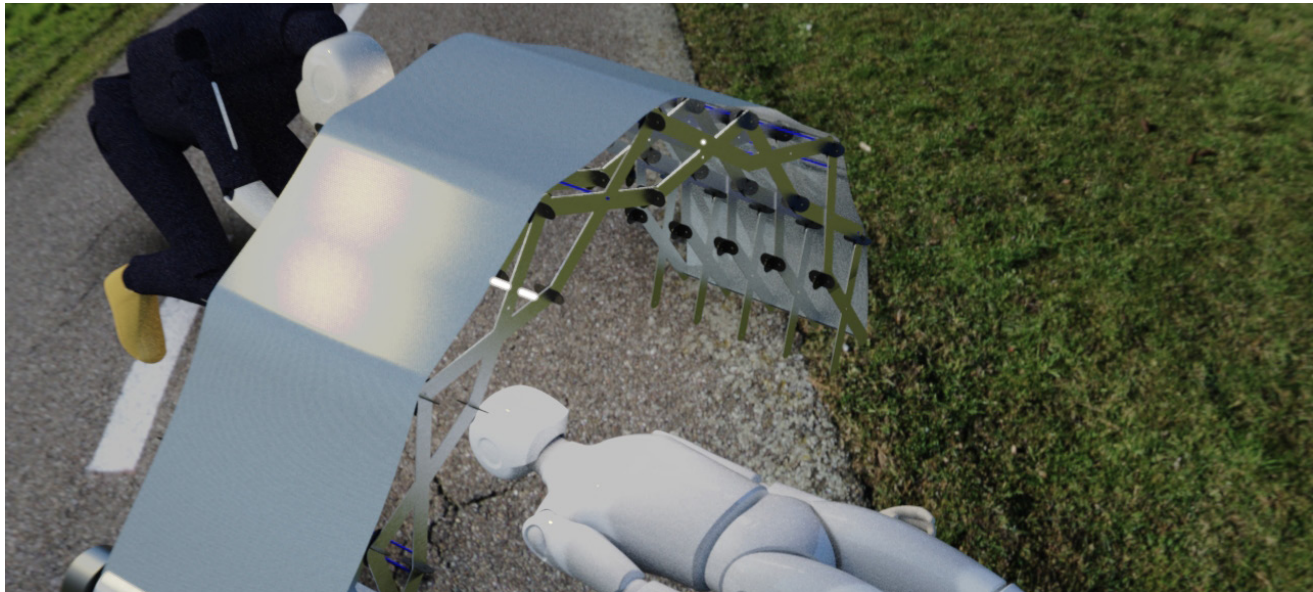
HOW just in 5 seconds you can have a large area by a simple movement. it is very light to carry and very fast to set up and to pack as well.



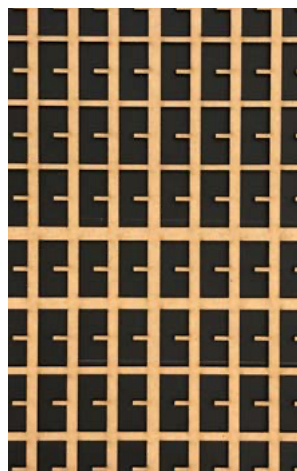
the greatest emphasis is on two features:

mobility and easy /fast to use .It should be light to transport and quick to assemble and disassemble in various types of emergencies.

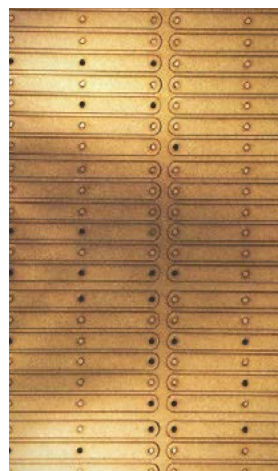
prototype made from wood



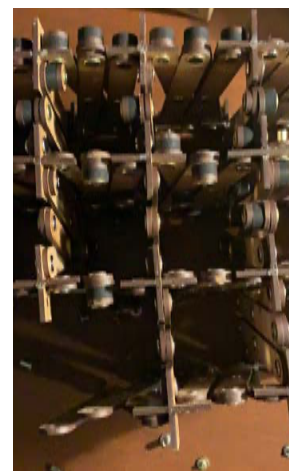
step1
the form



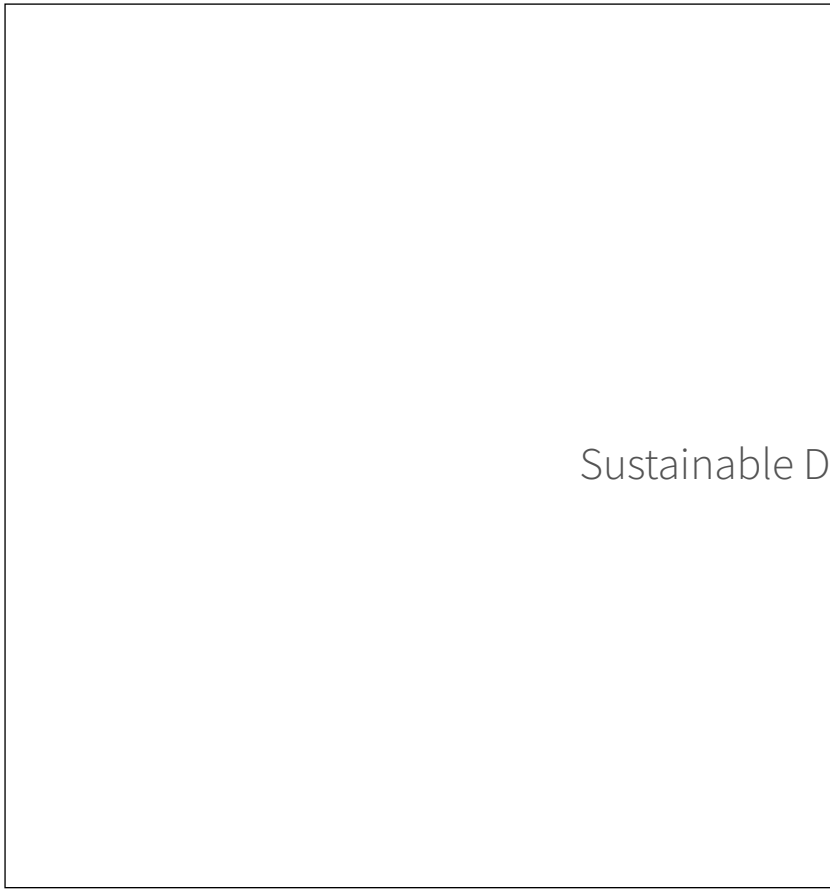
step 2
the joints



step3
laser cut



step 4
Finam prototupe



Sustainable Design Projects

SENSORIA

reuse the fresh fruit market waste

the stand which give new beginning to the fruit
and vegetable waste

MATERIAL

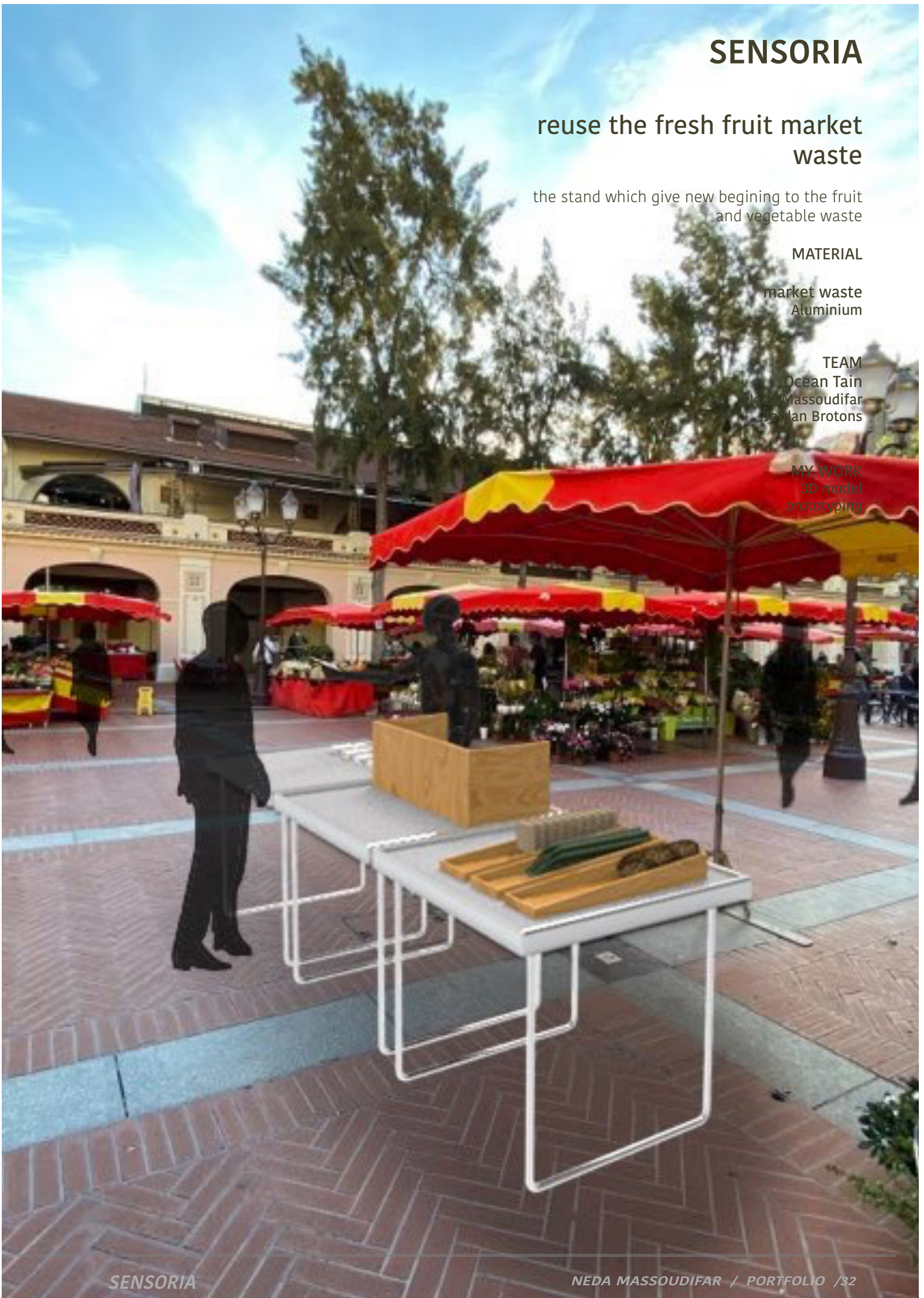
market waste
Aluminium

TEAM

Ocean Tain
Neda Massoudifar
Jordan Brotons

MY WORK

3D model
prototyping

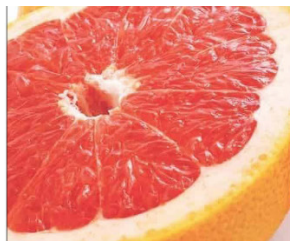


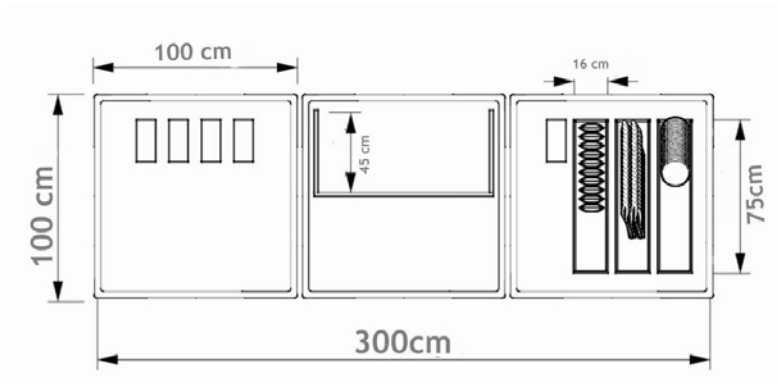


CONCEPT

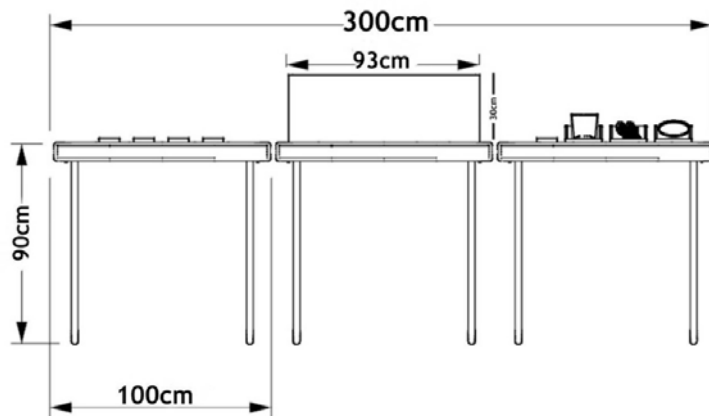
The market is a place where you can do your shopping but beyond that it is a place of exchange, sharing and meeting. Daily event for those loyal customers who come for their morning walk and chat with their usual traders. It's a date you, they meet their friends from the market there, it is convivial and the joy of living reigns there.

HOW TO GIVE A SECOND LIFE TO FRUIT MARKET WASTE?





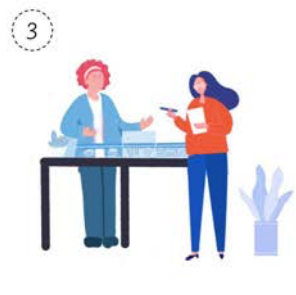
Food waste is a significant problem for environmental, economic and food security reasons. The retailer, food service and consumers have been recognised as the parts of the food supply chain where the possibility of reducing food waste is greatest in industrialised countries.



1 Walk in the direction
Discovery of the Sensoria



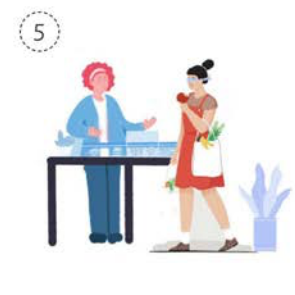
2 Answer to the
questionnaire



3 Tasting stage
of the market



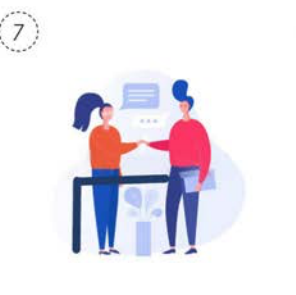
4 where the customer feels
the product



5 Tasting stage where the customer
tastes the product



6 where the merchant shows the
customer damaged fruits



7 The customer buys the products
on the stand Sharing experience
and news



8 sharing with his
entourage

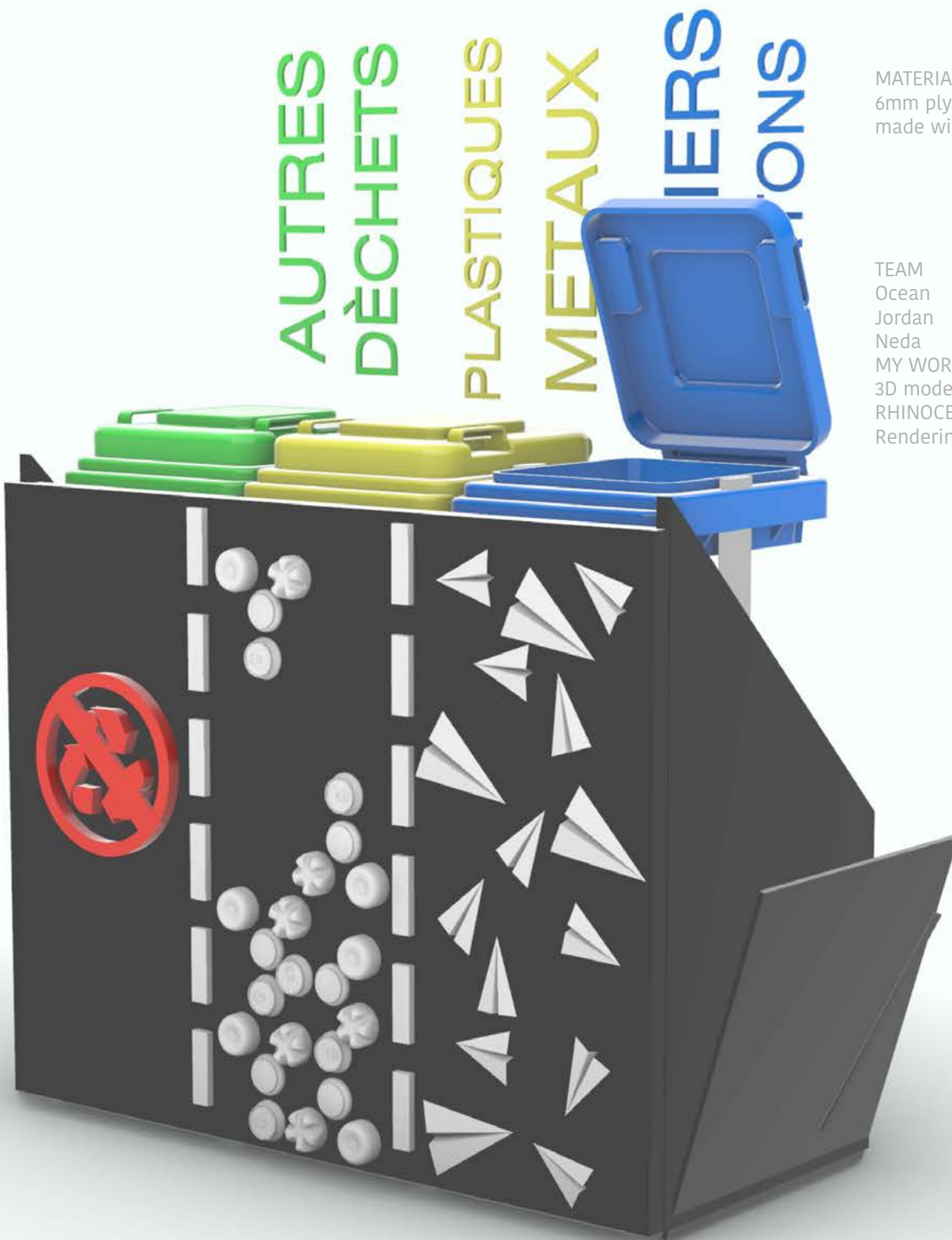
FOLLOW ME

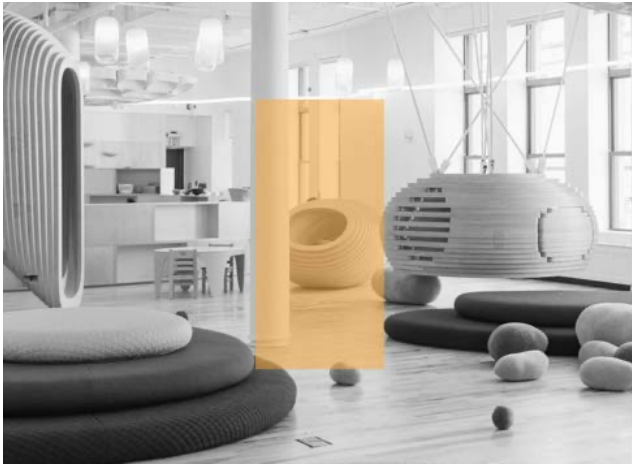
Modular Trash case

This modular system made to help people get a better idea about where to put their waste for better recycling..

MATERIAL
6mm plywood
made with a lasercut

TEAM
Ocean
Jordan
Neda
MY WORK
3D model
RHINOCEROS
Rendering





PROBLEM

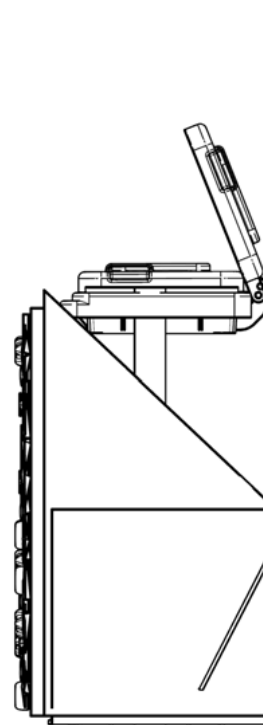
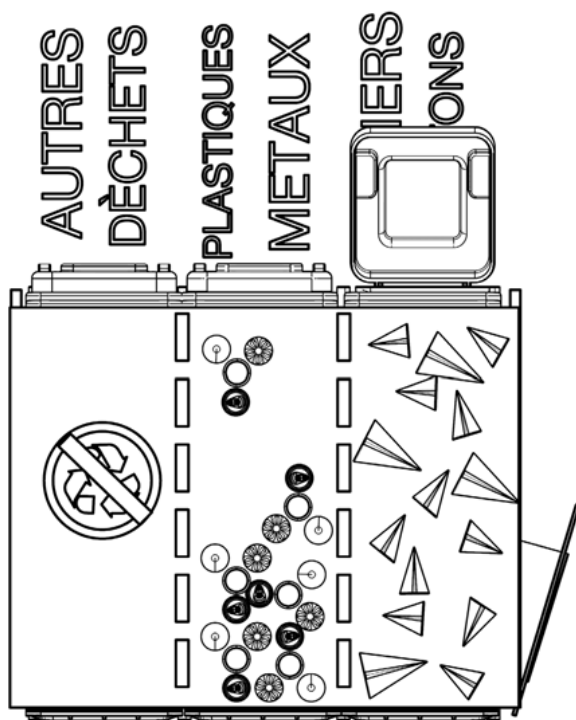
After doing a research we found that many students have lack of information to recycle their waste.

SOLUTION

OUR SOLUTION TO SOLVE THE PROBLEM IS TO design a new stand which shows them which trash end up in which bin..



In General we you three general colors for recycling waste such as yellow always goes for the plastic and metal waste ,Blue is for paper And we use green for Organic waste



POMA

AQUABANE

A small structure in the middle of the lake aplan which let the scientist to collect the data,our stake is the Global warming and our goal is warning the people about these danger.

MATERIAL
copper sheets
pine wood
new material

TEAM
massoudifar Neda
Gharaati Masoud
Moareu Laetitia
Jodie Vagner

My Job
sketches
Idea
Material

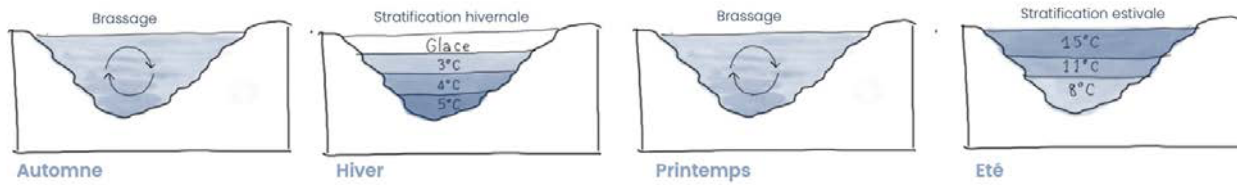


Sensitive and little-known environments

Generally located at an altitude of over 1500m, Alpine lakes are sensitive ecosystems with high social, cultural and ecological value. They are subjected to extreme climatic conditions, their complex functioning is still poorly understood. However, they are rich in unique flora and fauna.

SEASONAL LAKES

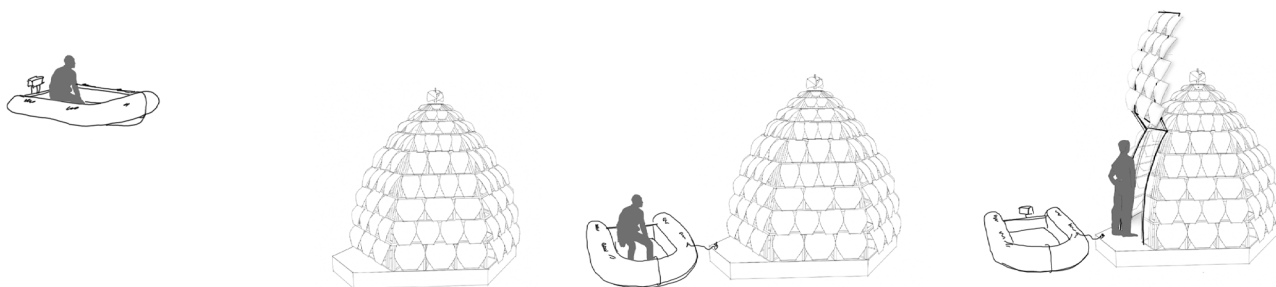
Alpine lakes change with the seasons and therefore with changes in temperature. The seasonal alternation of periods of thermal stratification and mixing has important consequences on the biological life of the lake. If this brewing is absent, no life is possible. This mixing is entirely dependent on temperatures and pollution.



Know and protect

Our nomadic aquabane would be part of the "Sentinel Lakes" network, which aims to improve understanding of the functioning and threats that weigh on these lakes, in order to better preserve them.

Our floating island self-sufficient in energy thanks to a wind turbine would collect and transmit the necessary data to scientists over 1 or 2 years.





Matériaux



Bois de Pin sylvestre



Aggloméré résine,



Bronze

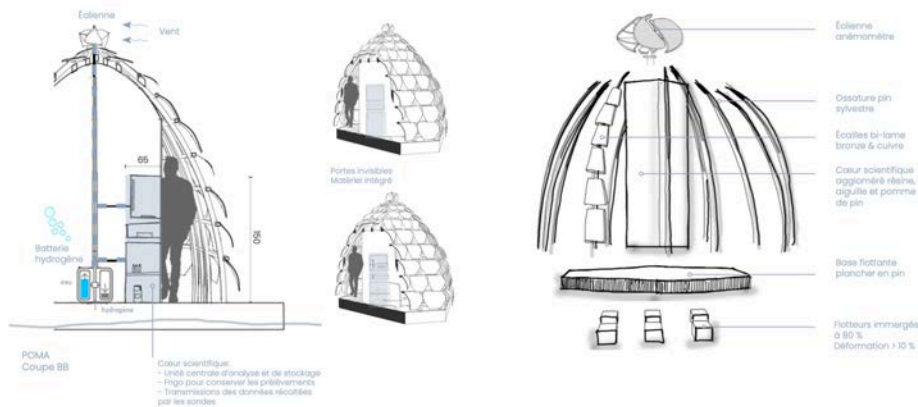


Cuivre



Flotteurs polypropylènes

Décompositions



The Spification
 open close
 the structure

POMA

MÉTAMORPHOSE

The Modules which convert
sound into and electrical
signal

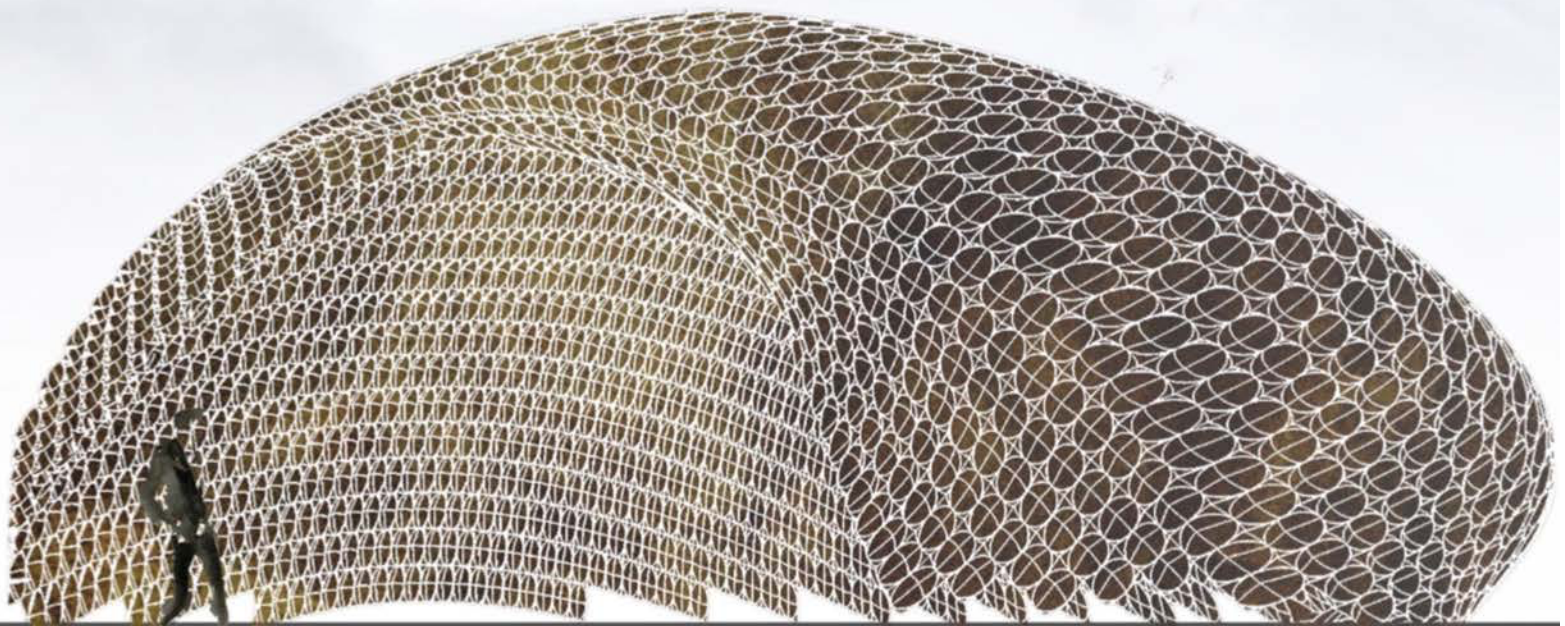
the modul
MATERIAL

piezoelectric
copper
aluminium
paper

TEAM

Masoud Gharaati Sotoudeh
Neda Massoudifar

MY WORK
3D model
prototyping
modeling
Idea

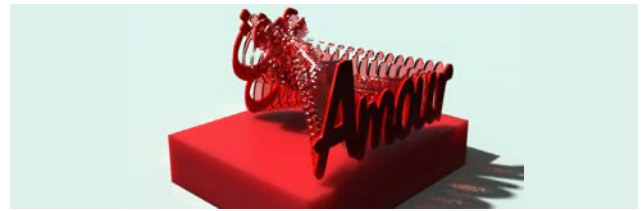


BRIEF- Sound Polution

The main task is designing something to decrease the sound polution

CONCEPT

we began by the energy which we use to translate some words in our head from one language to another,our experimentation was some art pieces which we designed and made in 3d .



for example:Bat
it can use its ear to
verify the direction
the material and
distance

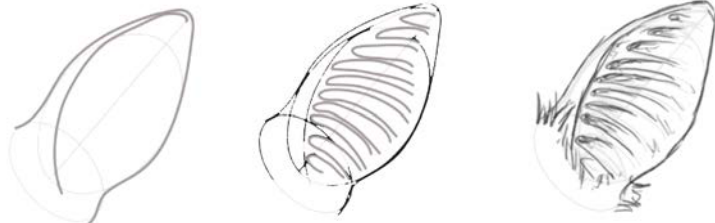


through the research
we found the animals
who are more sensitive
to the sound waves



SCENARIOS

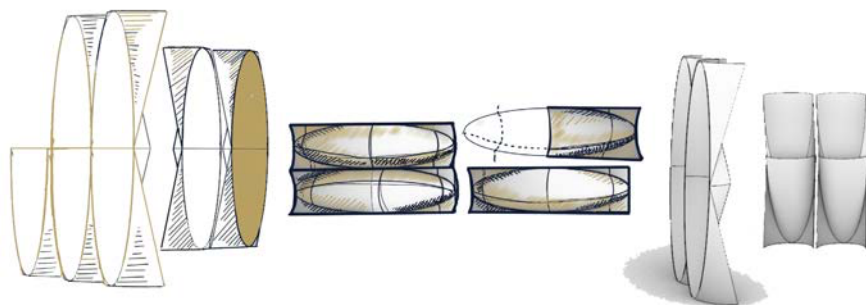
finding the best shape
from the bat's ear

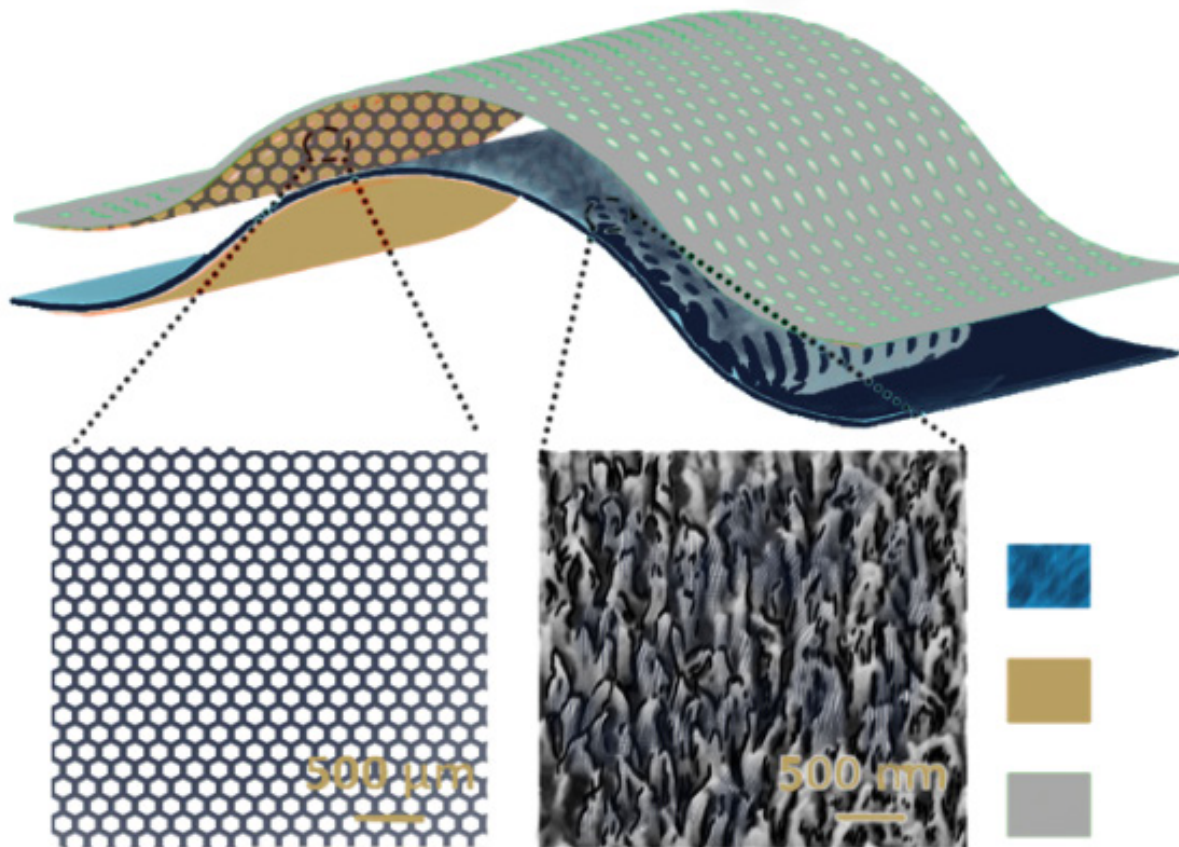


try to make a modular
shape out of it

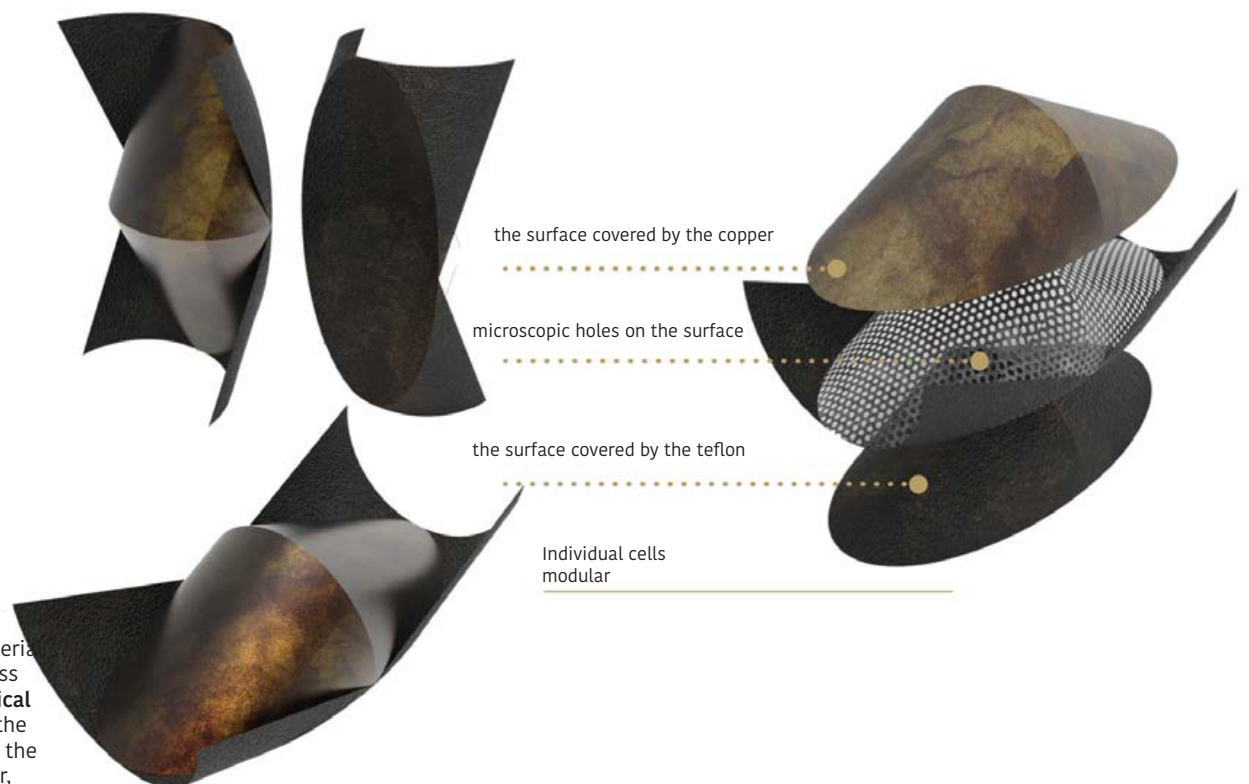


using different angles
to find the best
combination

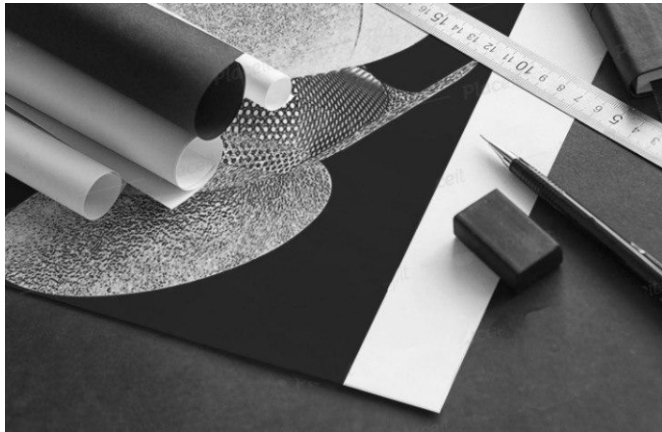




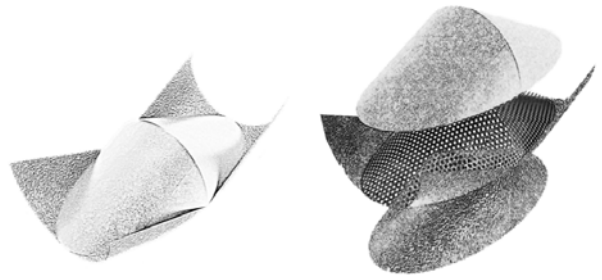
If we are making pinholes on the surface, cover one side with copper and place the other surface on Teflon.
 Piezoelectric is a material that converts the stress and strain of mechanical movements, such as the bending of a wire and the compression of a layer, into an electric charge.



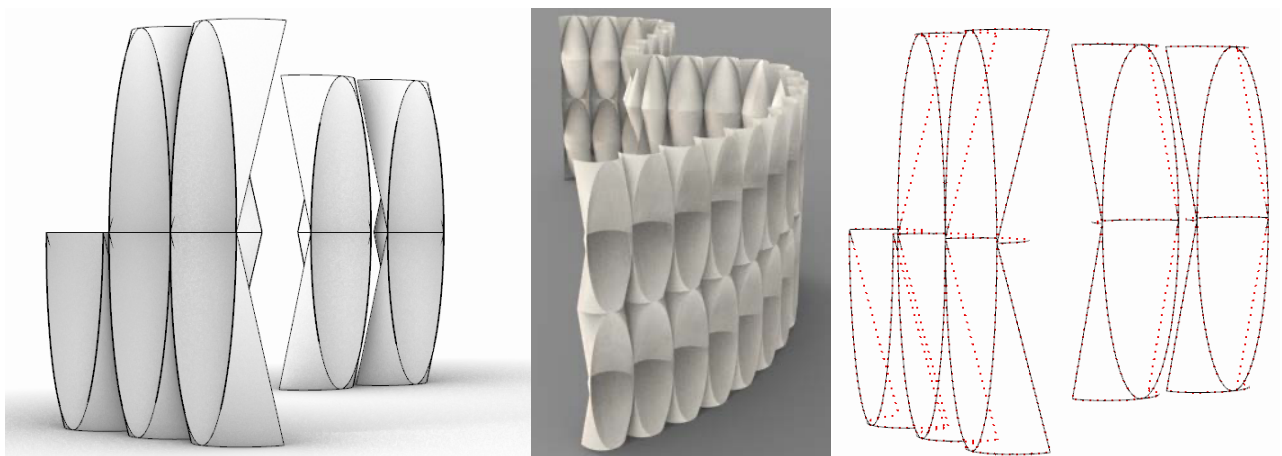
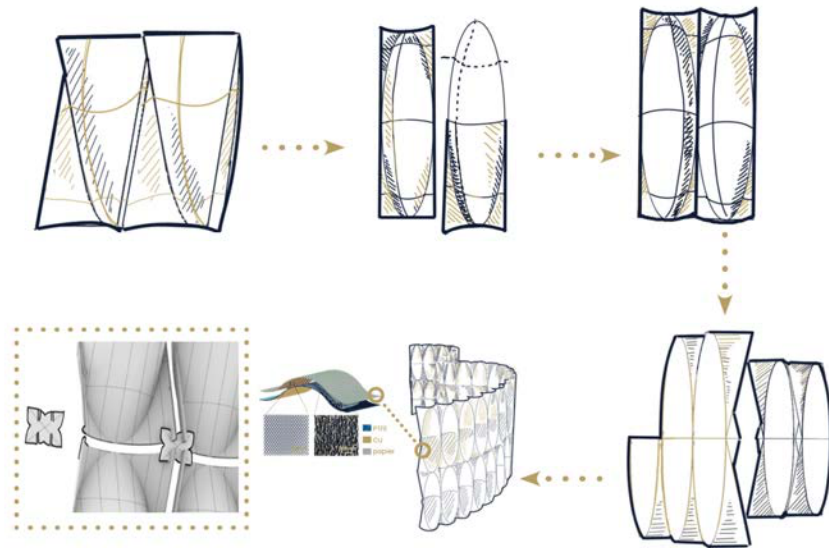
Piezoelectric is a material that converts the stress and strain of **mechanical movements**, such as the bending of a wire and the compression of a layer, into an electric charge.



The general shape of these absorbers is a plate spaced from the hard wall which vibrates freely.



When a sound wave collides with these absorbers, they vibrate and transmit these vibrations through the air gap.



When a sound wave collides with these absorbers, they vibrate and transmit these vibrations through the air gap.

LA COLINE

outdoor playground on the mountain

MATERIAL

concreat
crock
aluminium

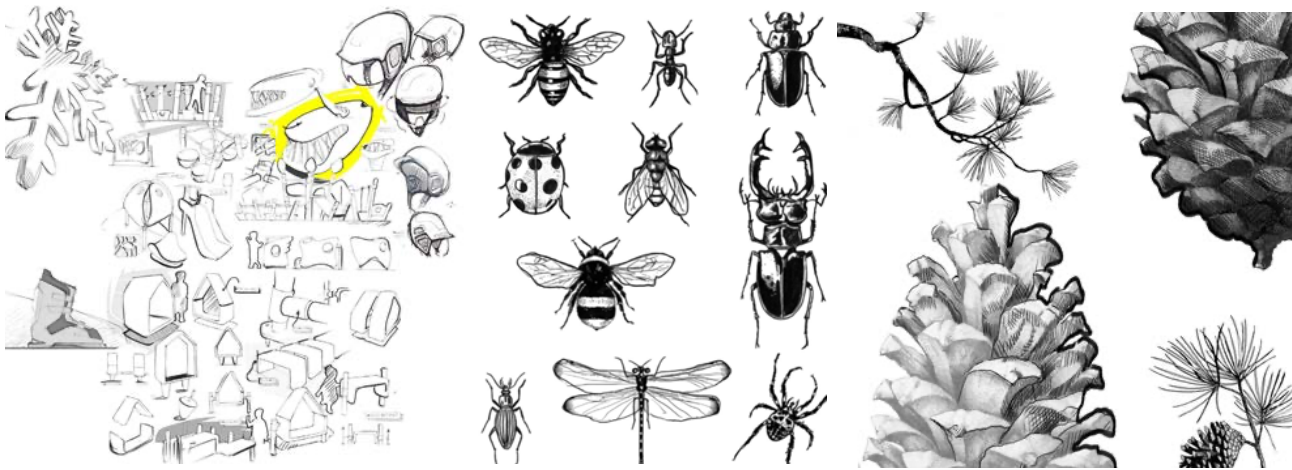
TEAM

Masoud Gharaati Sotoudeh
Neda Massoudifar
Anna Senequier
Jordan Brotons

MY WORK

3D model
prototyping
modeling



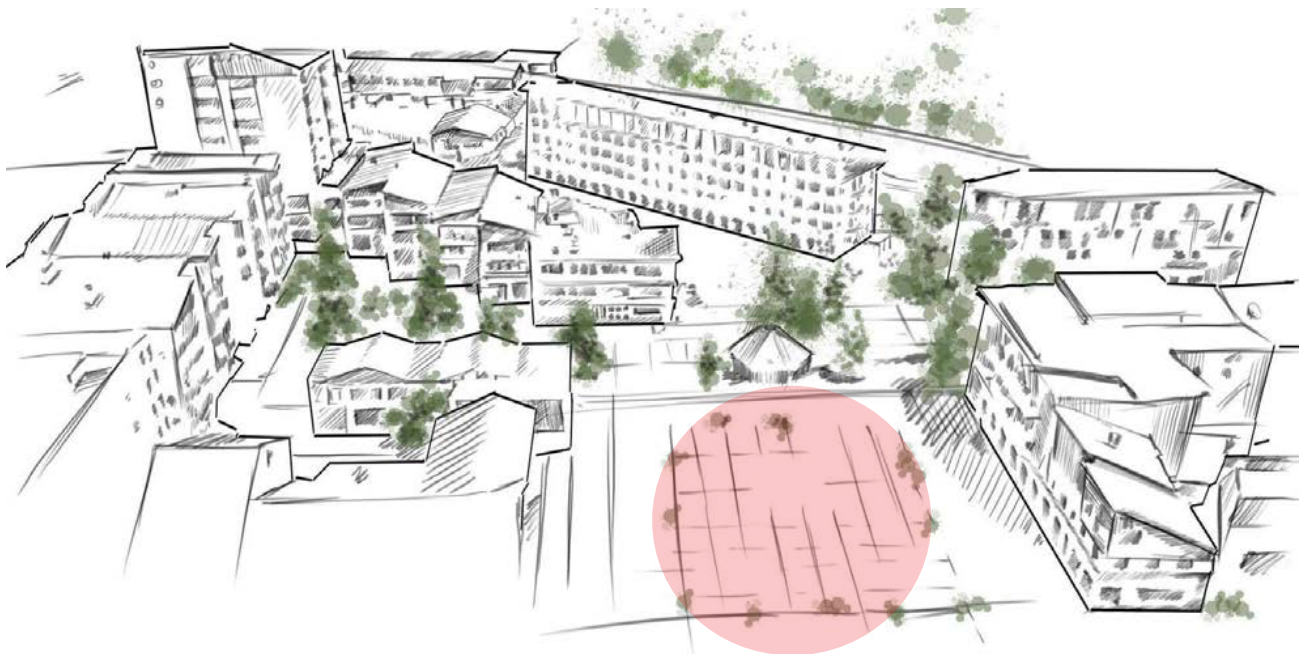


BRIEF

Children love to play in the playgrounds: they let off steam, enjoy the great outdoors and play together. Games, and particularly games where they have to collaborate, are essential for the development and construction of children.

Discovering the world

Children are curious and they need to understand and discover the world around them. The game is particularly favorable to this discovery because it allows to experiment, to learn, to reproduce gestures, to solve problems and to collaborate.



The play areas are precisely designed to create these discovery situations with original, stimulating and colorful designs.

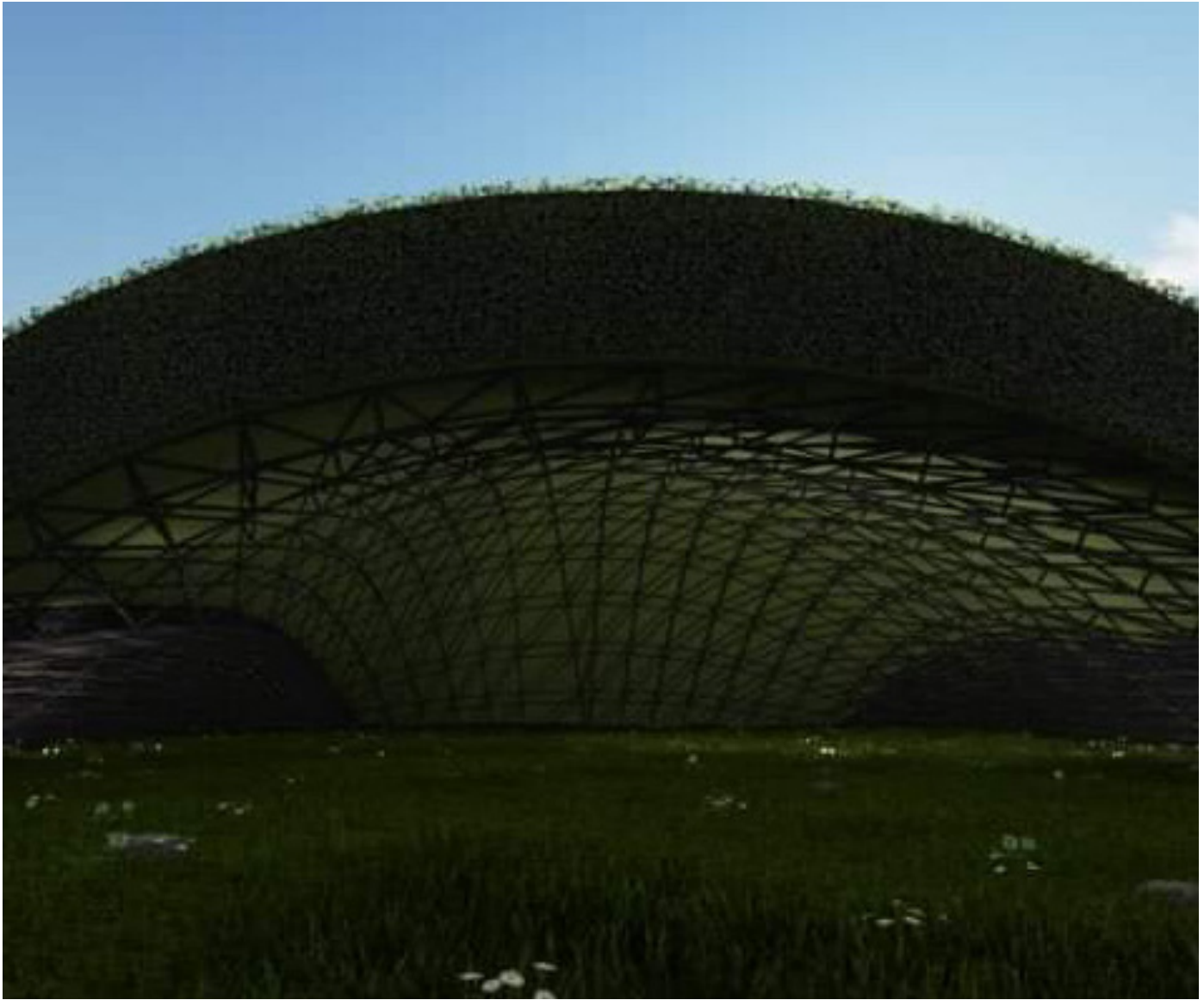
Children feel good there and they explore and discover all the activities they can do there.

An imaginary place that stimulates
Playgrounds are universes made to develop the imagination of the little ones.

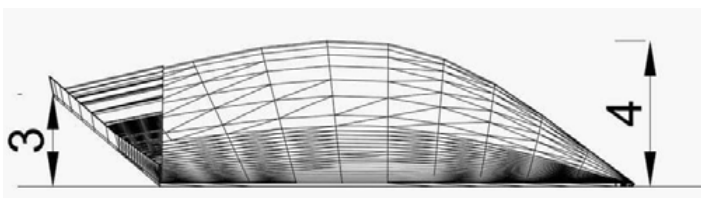
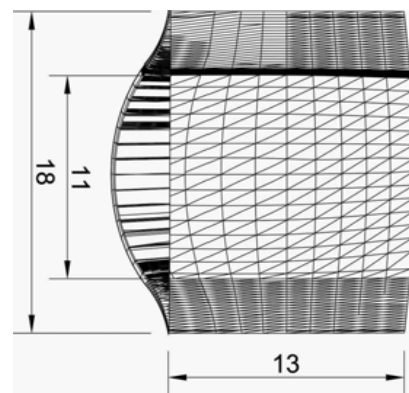
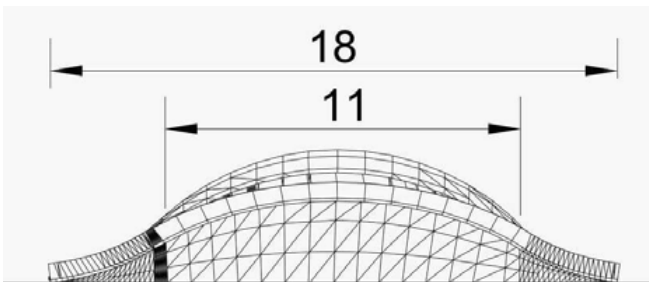
Because pretend playing is beneficial for children's growth. Children embody the character of their imagination in the real world: it is ideal for their cognitive stimulation.

- Common points
- Similarity between all
 - The same games
 - The same principle of a fortified castle
 - The play areas develop children's motor skills, balance, sociability but not necessarily the intellectual or decision-making





Reflection of the mountain and the beauties that surround us







Architectural design Projects

PRIMA P.180°

Micro-architecture

PRIMA is proposing a new art model that will bring together in a single educational project, raw materials, creativity and construction.

MATERIAL

using only stone,
concrete and/or steel

TEAM

Neda Massoudifar
Jean Paul Vaison

My WORK

Sketches
Research part
3D model





An unprecedented art model

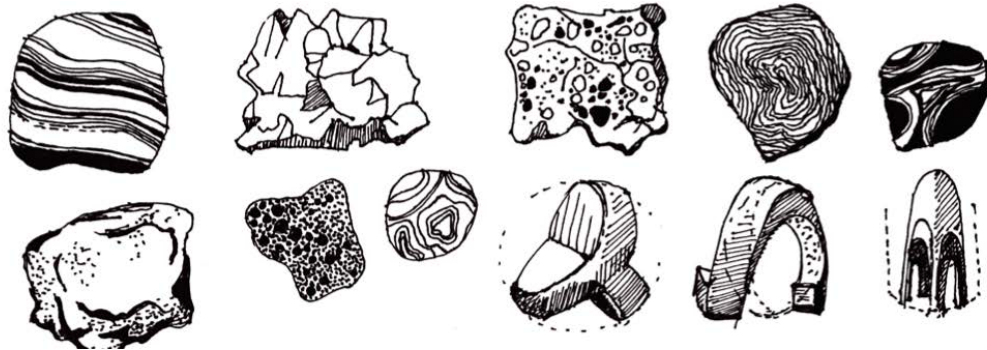
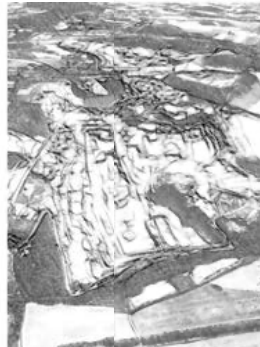
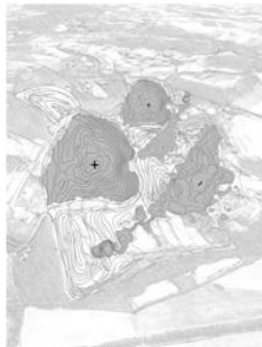
An unprecedented art model built on the merging of clear artistic goals with an entrepreneurial strategy, the competition sets up the conditions for a new partnership between industry and the next generation of architecture and design students.

PRIMA is a new kind of artistic 'eco-system' made from the collaboration between industry, art education and local construction firms.



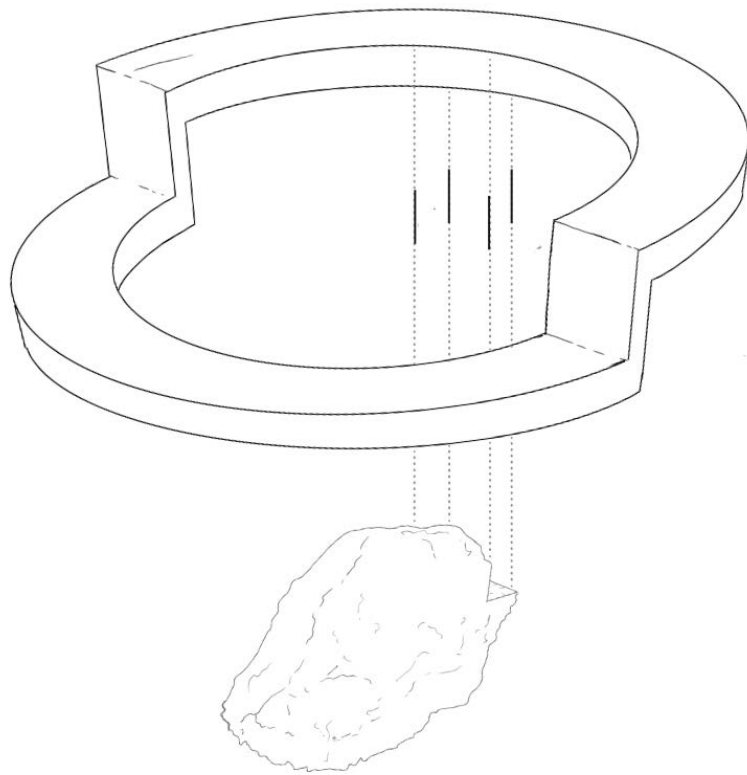
Micro architecture

Micro architecture as it is understood within the framework of this competition is a work of art on the frontiers of architecture and design: a work on the scale of a human body.



The curve

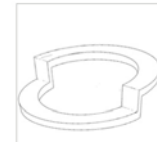
From the natural movement of stone, to the technical prowess of concrete, to the very movement of the body, the curve is a vehicle for sensations, emotions and particular feelings.



there are no major structural constraints, the concrete must be reinforced, and we will be more specific on the rough stone it is the structure concrete, in a sense of the essential structural as well as conceptual points of our project.



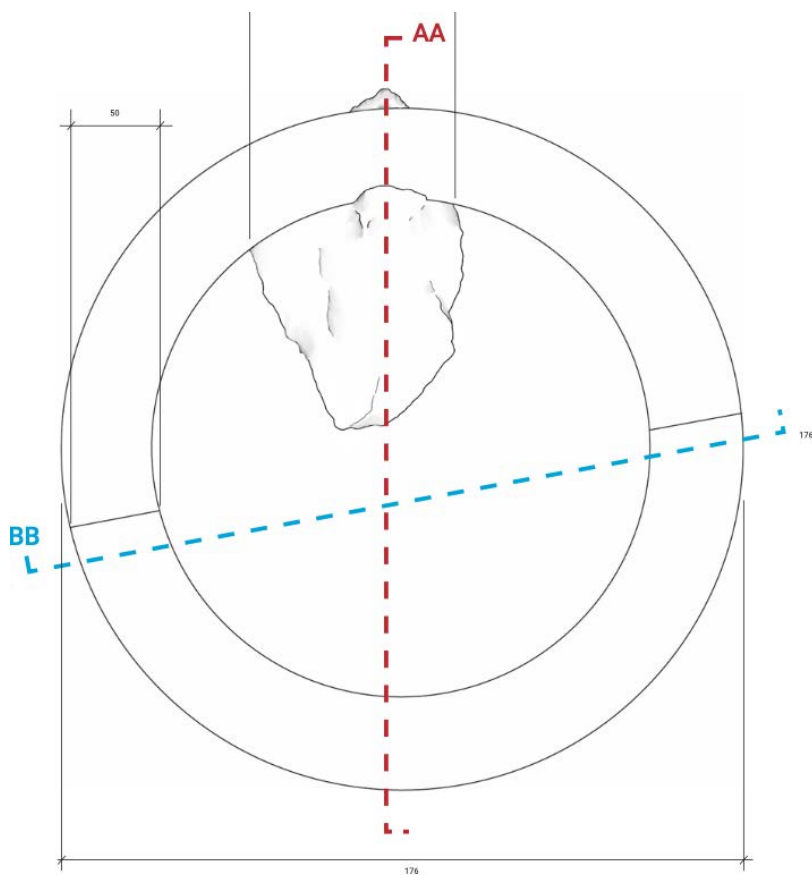
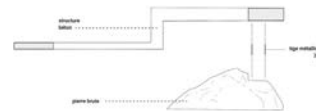
Pierre brute



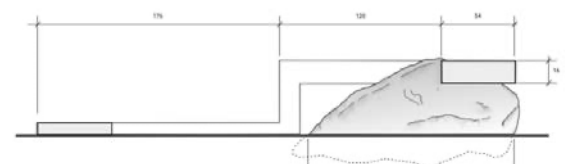
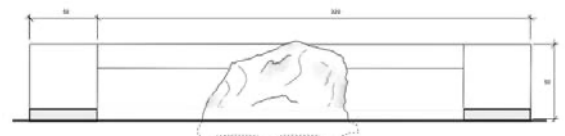
Structure béton



Projet

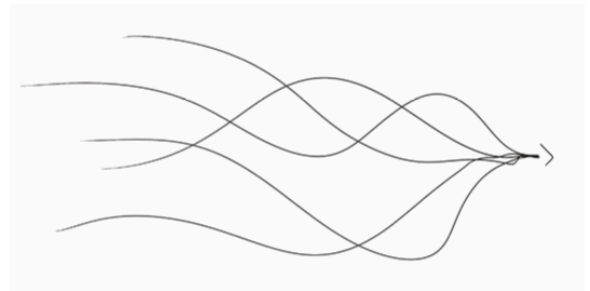
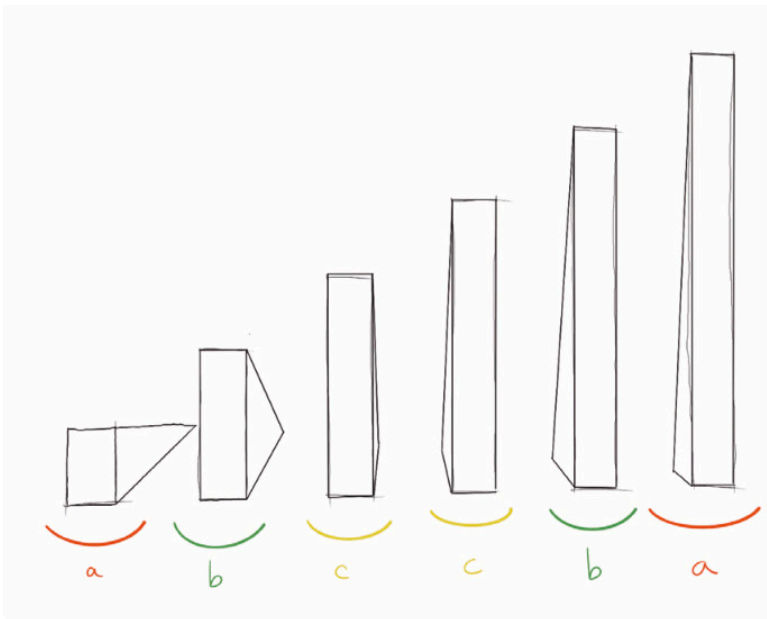


The rough stone would be connected to the concrete structure by 12cm metal rods, fixed by chemical sealing.



La convergence :

La convergence se définit par le fait de tendre vers un même point, un même but ou un même résultat. Dans un premier temps, l'Homme & la Terre sont sur le même piédestal. Mais au fil des années, ce dernier a évolué, commençant à avoir du pouvoir sur celle-ci. L'idée de convergence ici reviendrait à trouver un équilibre entre ces deux pôles afin qu'ils puissent converger ensemble vers une même identité, une même empreinte.





POPOP STORE Cap 3000

PROJET COSMOS

Popups are one of the easiest and fastest ways to show off for a jewelry store.

Material

- Plexiglass
- Wooden structure
- Metal wires
- LED lamps

Team

- Neda Massoudifar
- Pauline Mongin
- Ivanna Touma

My Job

- 3D modeling
- Idea Sharing

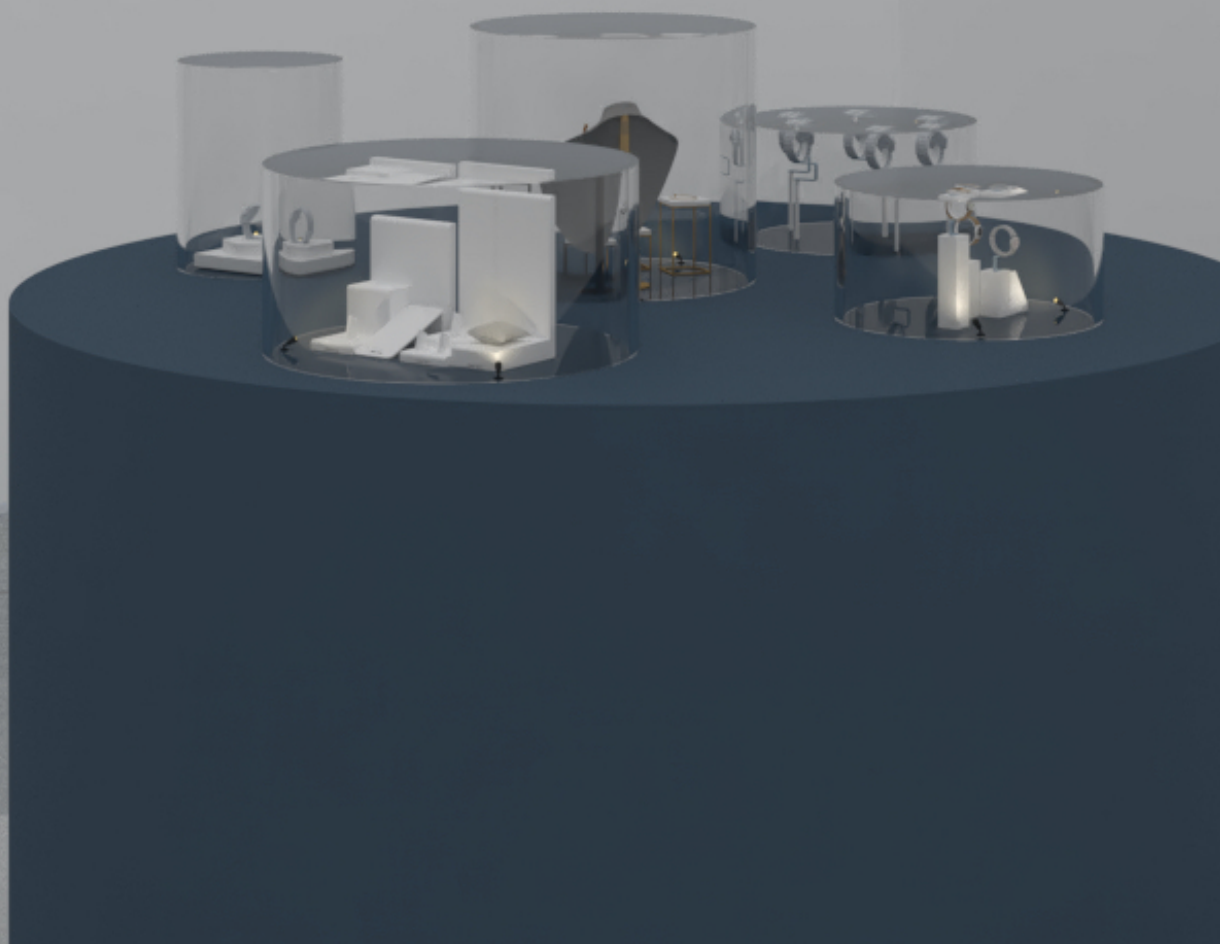


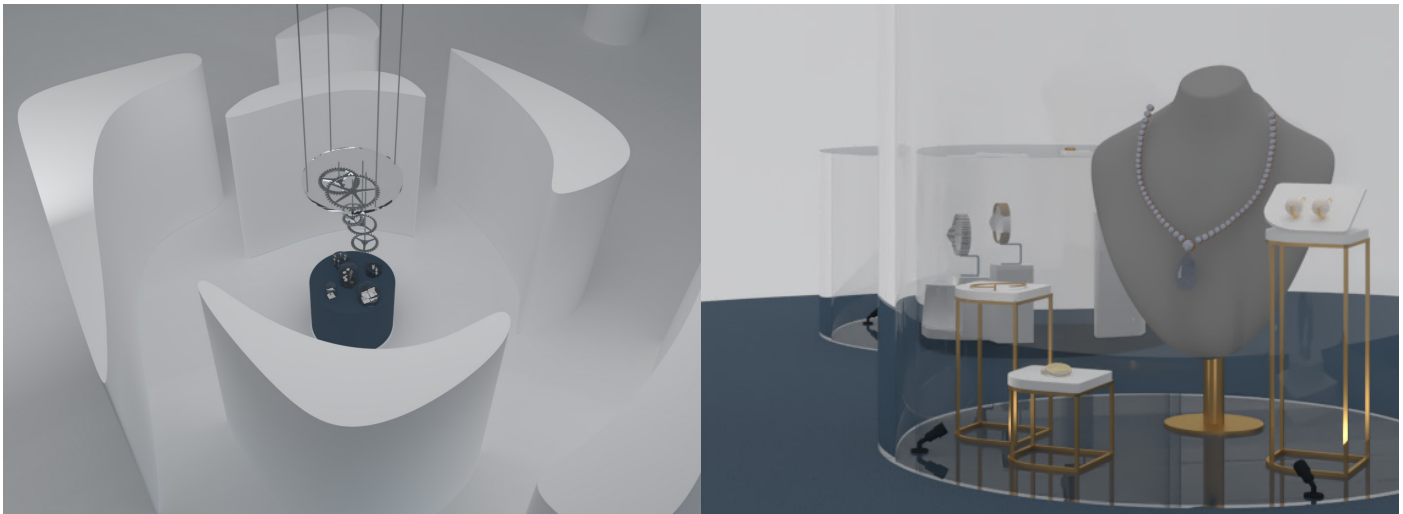
Leadership familial
Innovation technique

sport : vitesse
précision

Innovation
chronométrage
de haute précision

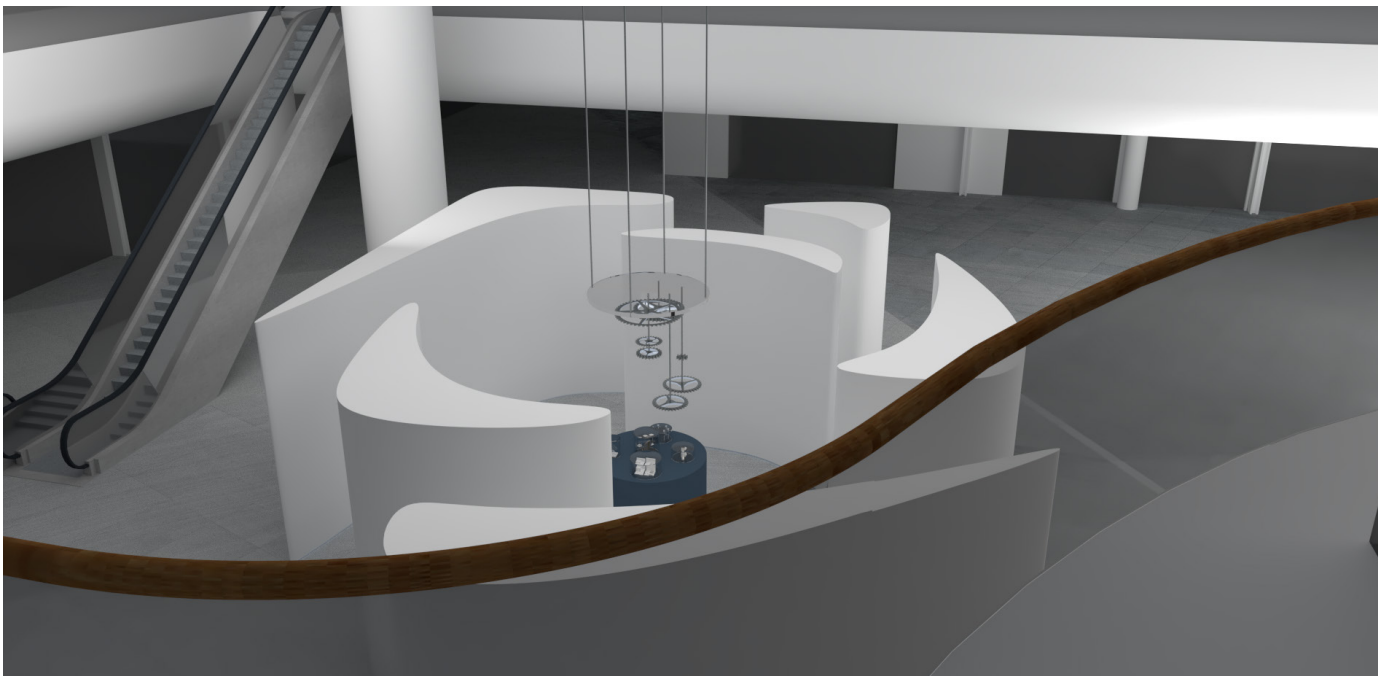
1965
Dinh Vs





Around this core, we have chosen to have walls that aim to envelop the central structure, to hide it and arouse the curiosity of visitors. These walls also have an informative function since they will contain explanations on the three houses chosen. Their particular shape comes from simplified constellations. As part of this project, we aimed to imagine a pop-up store that would present

three brands with choices present in the Auberi store. Auberi has been an official distributor and reseller of the biggest brands Horlogères and Joaillières for more than 60 years. Among these houses, some are known worldwide and offer prices ranging from affordable to very high-end.



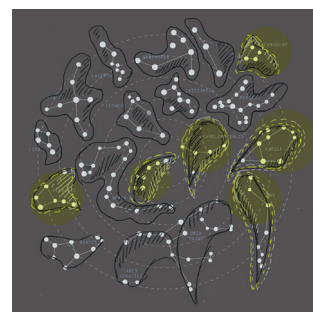
To begin with, we have chosen to have on seven different levels the gears of watches that represent the seven levels of the sky (the moon, Mercury, Venus, the Sun, Mars, Jupiter and Saturn) and that are suspended above our heads by steel cables. These gears will actually serve as luminaries that will illuminate

the jewels and watches displayed below. The base, which represents the earth, will have a function of support for jewelry and watches put under showcase. This central structure is the core of this project.

SEVEN HEAVEN

THE SYMBOLS

The base, which represents the earth, will have a function of support for jewelry and watches put under showcase. This central structure is the core of this project.



FORT MONT ALBAN NICE

RESTORATION

Restore the old fort of Nice

Material

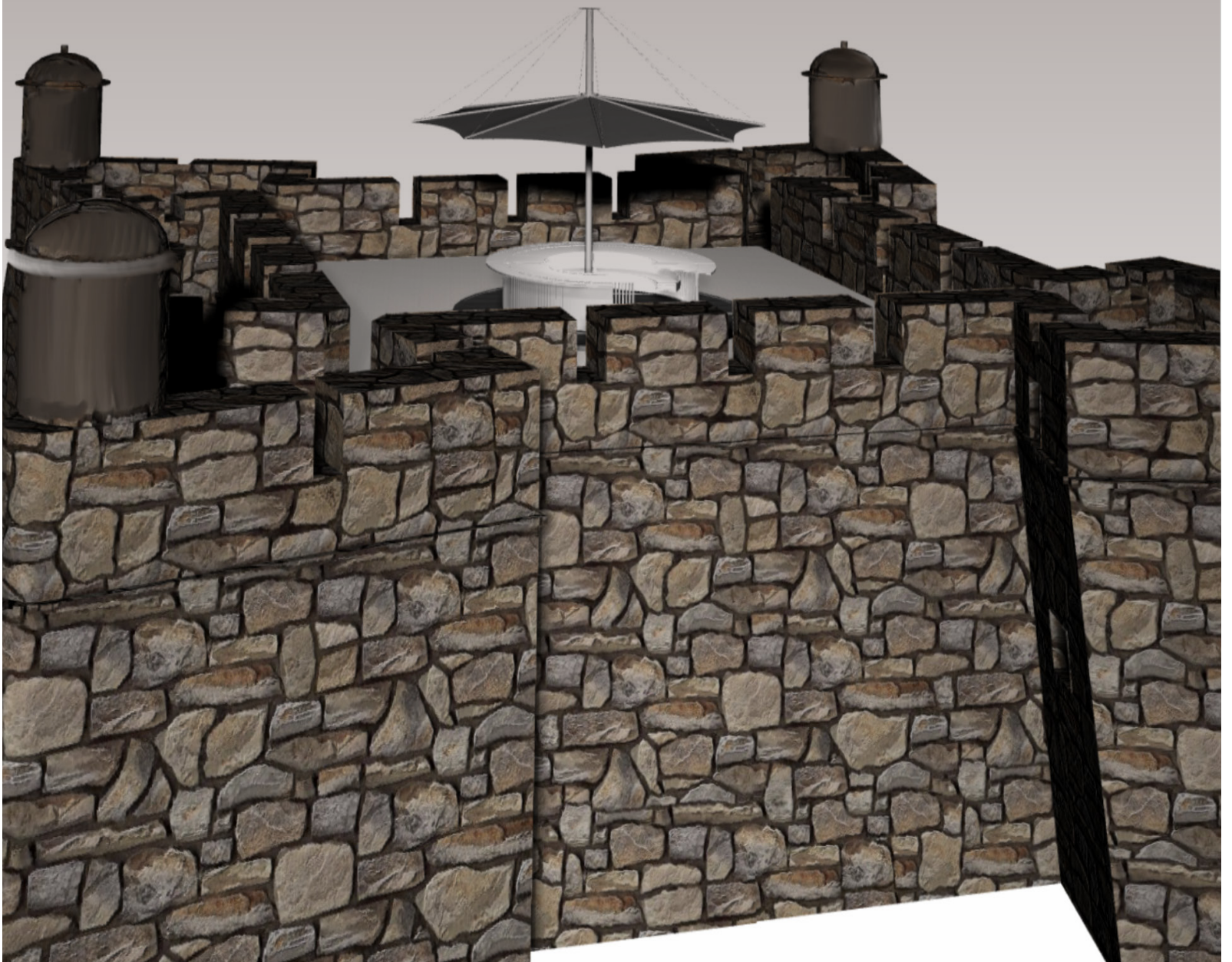
Wooden structure
Metal wires
Metal Panels

Team

Neda Massoudifar
Montserrat Vazquez
Solena
Agath Astrid
Malissa

My Job

W
3D modeling
Idea Sharing



Banquette

Place of Arms

Gallery

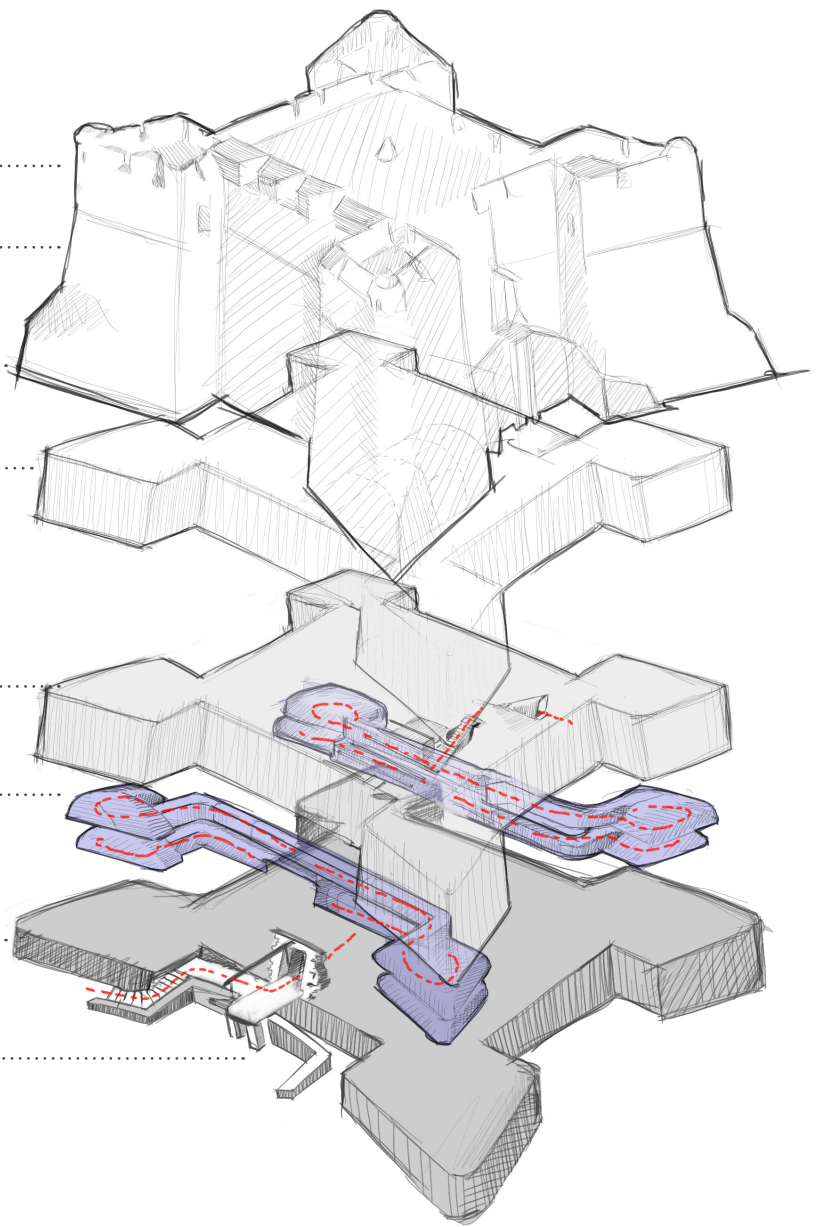
Casemate or Casement

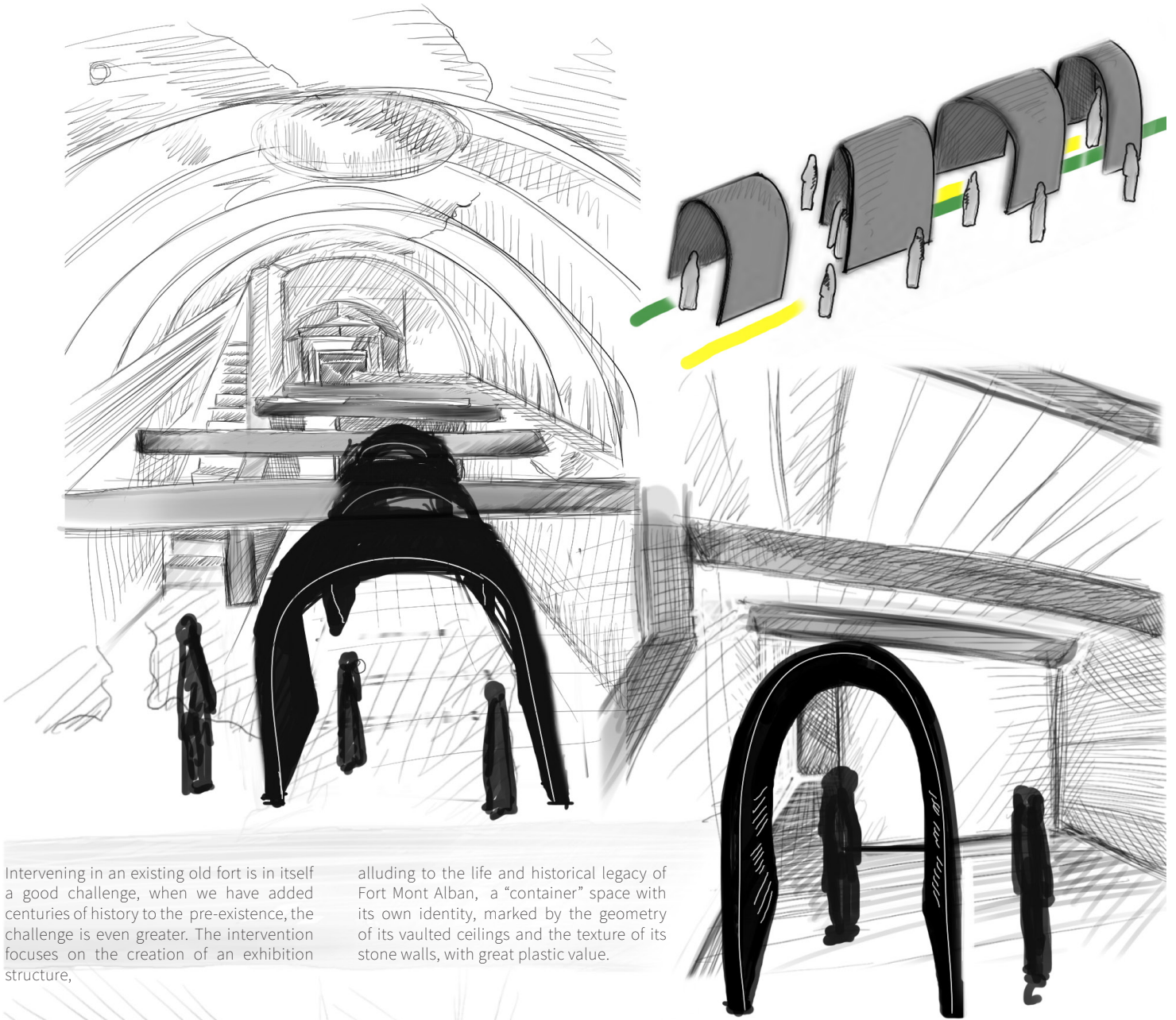
Covered Way

Bastion

Cordon

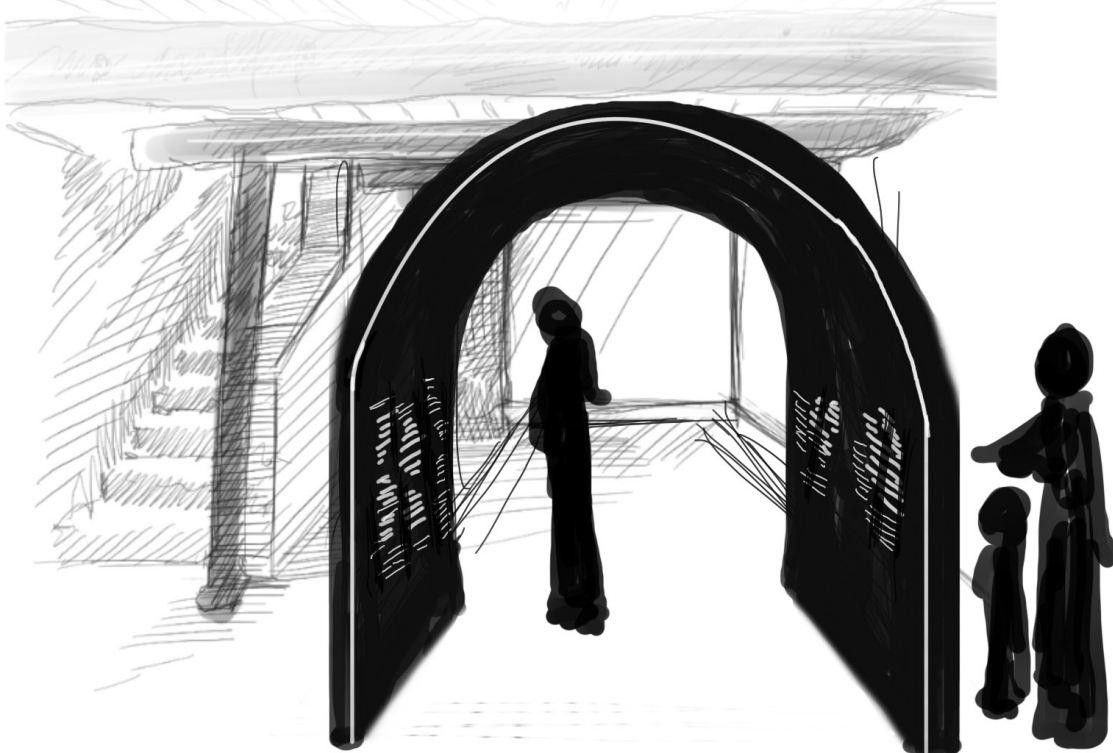
Counterscarp

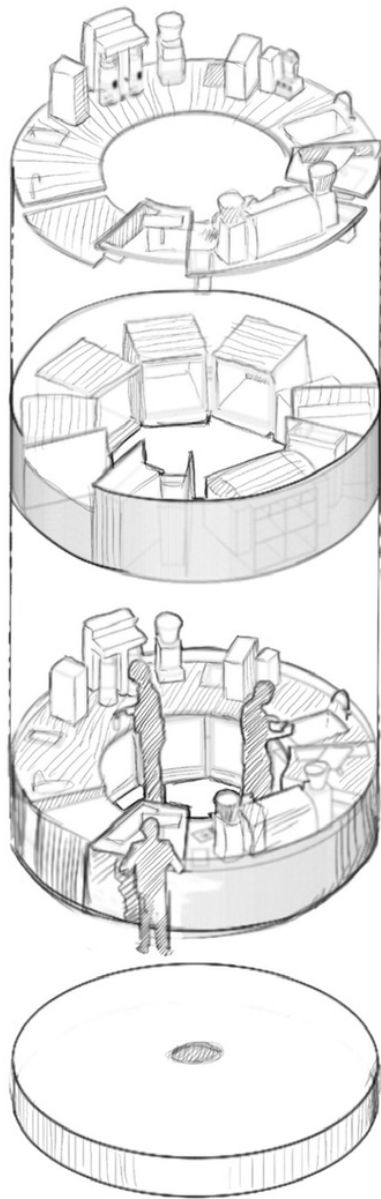




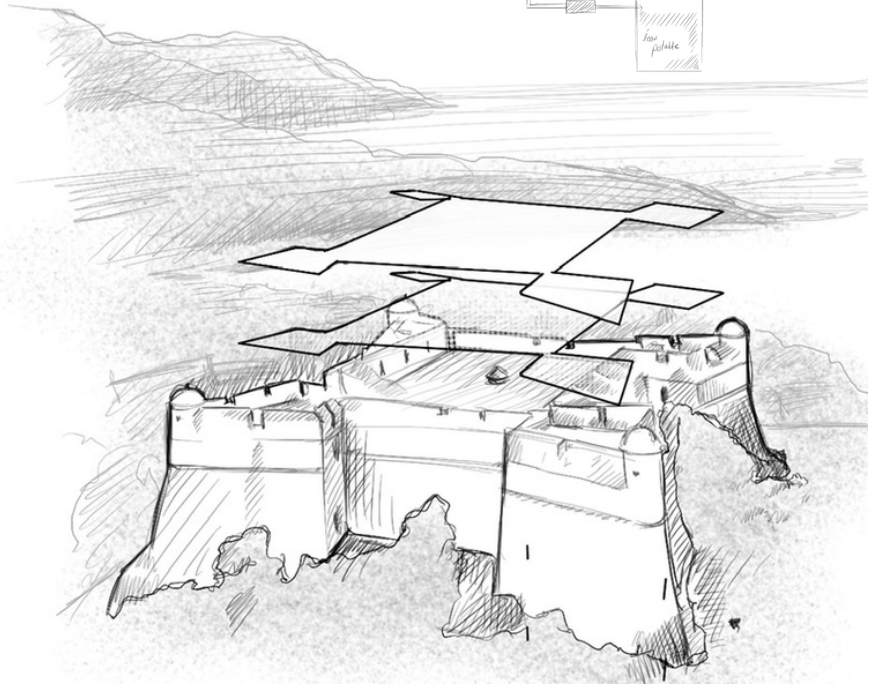
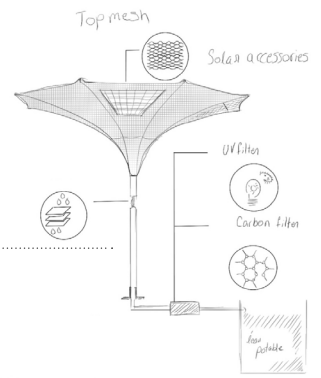
Intervening in an existing old fort is in itself a good challenge, when we have added centuries of history to the pre-existence, the challenge is even greater. The intervention focuses on the creation of an exhibition structure,

alluding to the life and historical legacy of Fort Mont Alban, a "container" space with its own identity, marked by the geometry of its vaulted ceilings and the texture of its stone walls, with great plastic value.



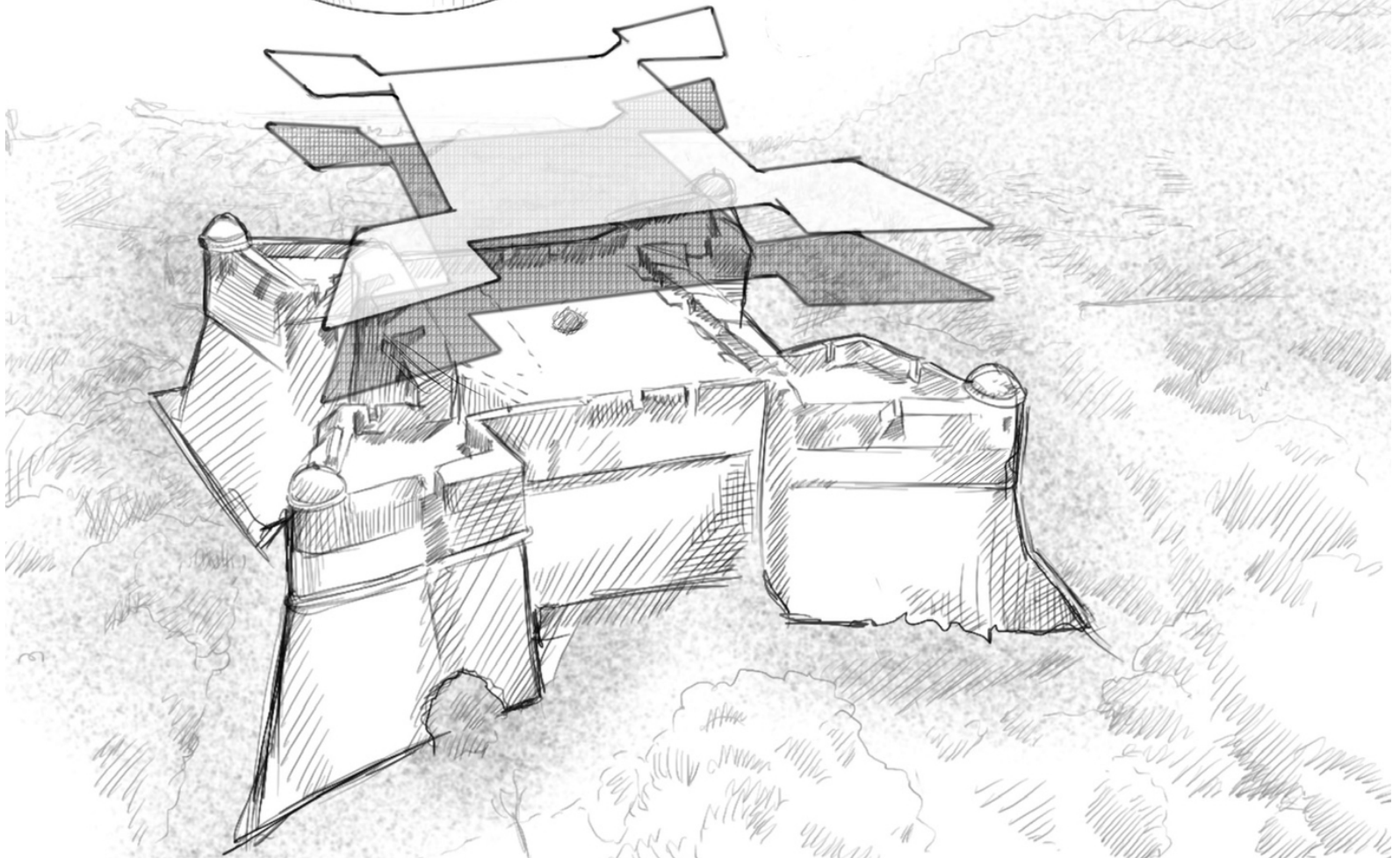


THE PARASOL WHICH WILL
INSTALL ON THE TERRASSE



the terrasse is designed to welcome the visitor with the fantastic view on the major part of french rivira the bar consist of the parasol with is equipued with solar cells

to produce electricity for the bar and cafe appliances it save the rain water as well in a reserve for watering or washing usage



PERFUMERY MOLINARD

RESTORATION

Restore the MUSEUM/LABORATOIRE

Material

Wooden structure
Metal wires
Tissue Panels
Metal Panels

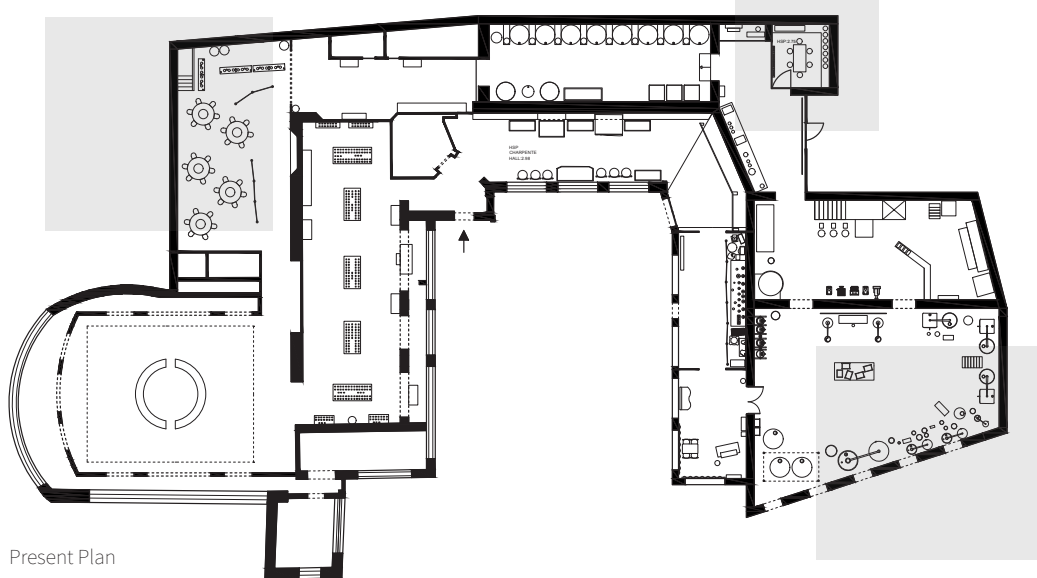
Team

Neda Massoudifar
lily-Fleur Albano
Romain Fernandez
Manoa Lecerf

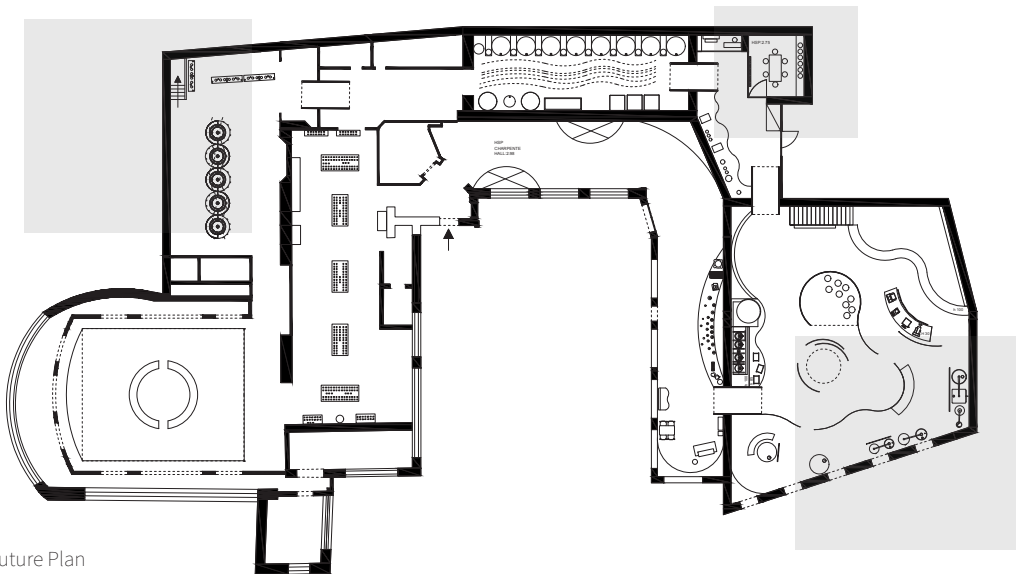
My Job

3D modeling
Idea Sharing





Present Plan



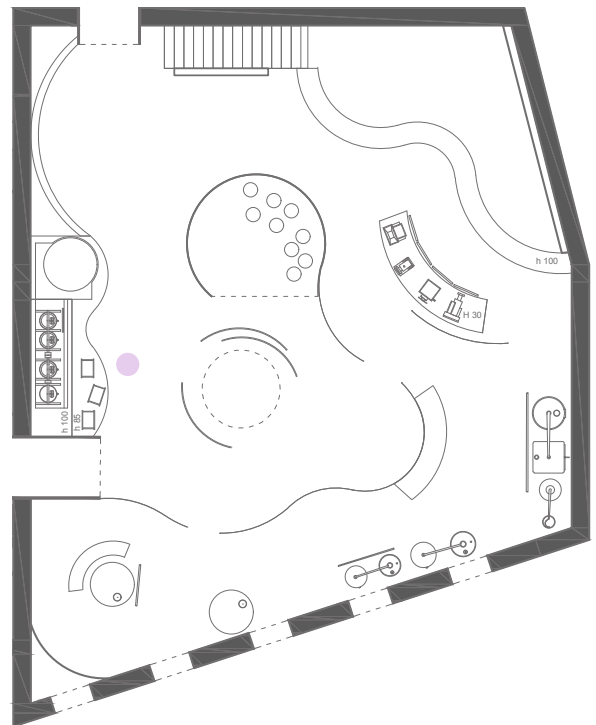
Future Plan



DISTILLOIR / SAVONNERIE

We decided to combine these two rooms into one in order to have maximum space and beautiful brightness.

The visitor will be able to follow the manufacture of perfume and soap in due course thanks to a playful scenography that is both universal and minimalist.





Enfleurage
2017



Grasse animale
1921

for defining the color palette we selected the most exclusive perfumes of house of Molinard and we were inspired by the color of their ingredients.



Distillation
1979



Distillation par solvant
2000



New Material design Projects

Nature is a brilliant engineer and builder. It knows how to create seashells that are twice as strong as the most resistant ceramics human beings can manufacture, and it produces silk fibers five times stronger than steel. Nature also knows how to create multipurpose forms.

OSTRÉIDAE

NEW MATERIAL RESEARCH

Oyster shell based concrete

Material

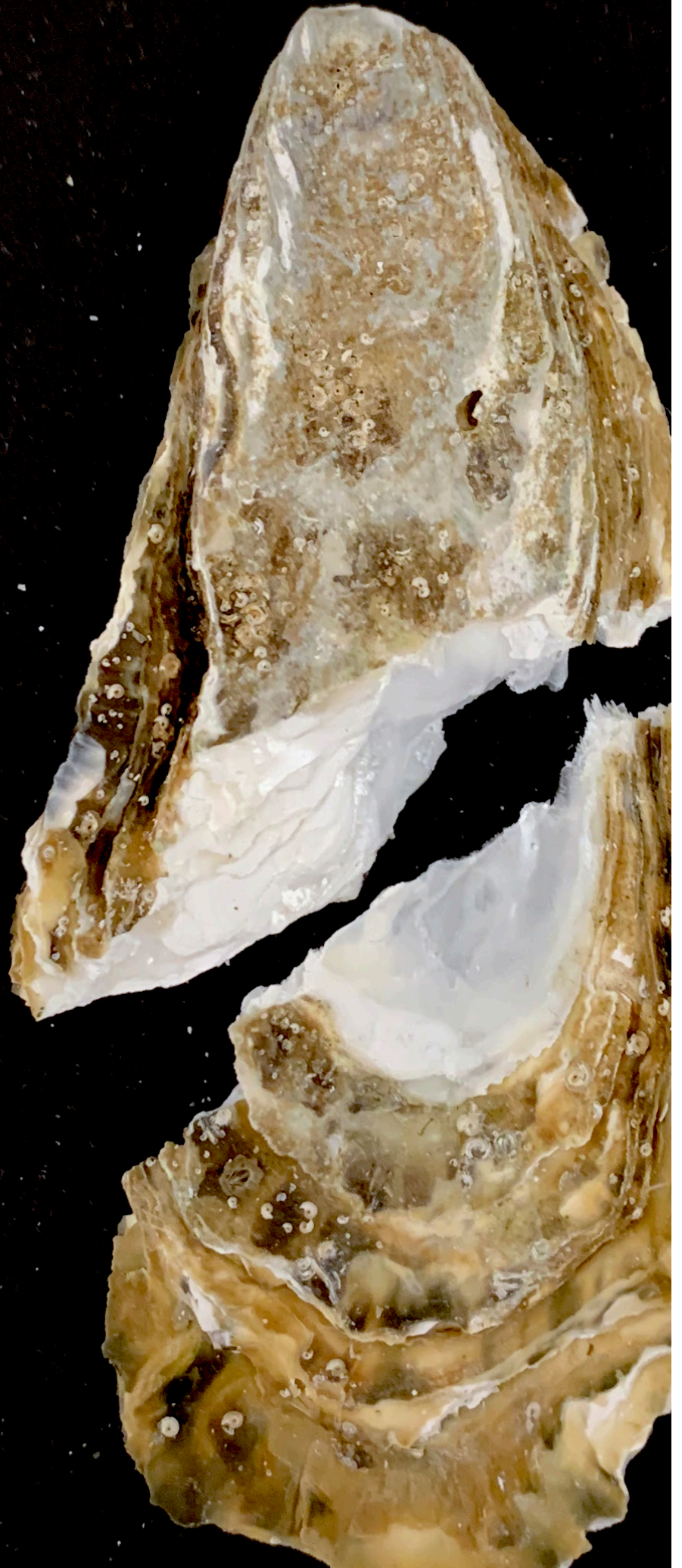
Oyster shell
Resine Organic
Plaster
Biomass

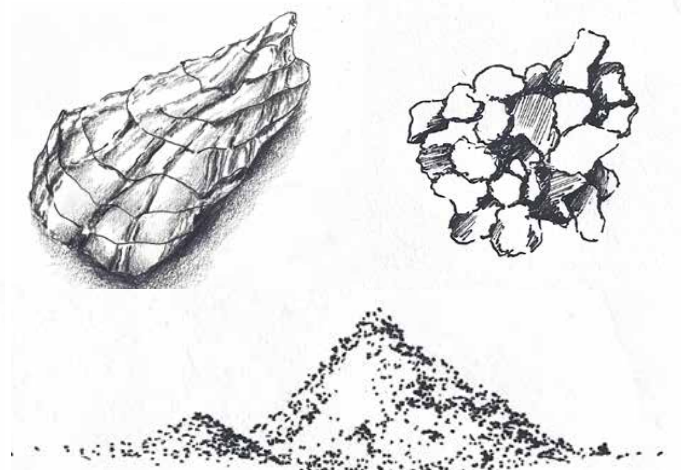
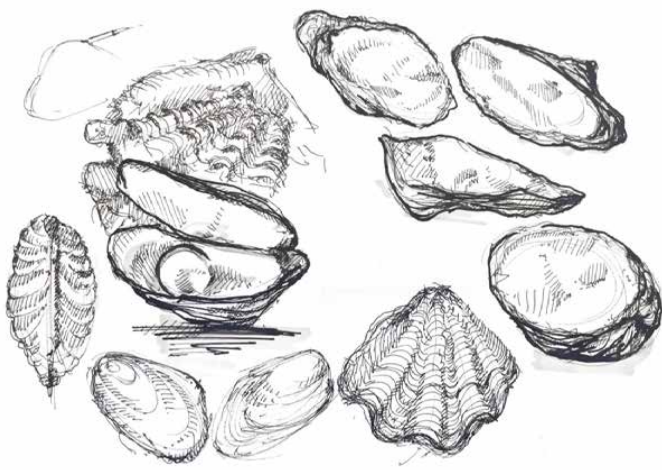
Team

Neda Massoudifar
Estelle Pasquier
Pauline Marandon

My Role

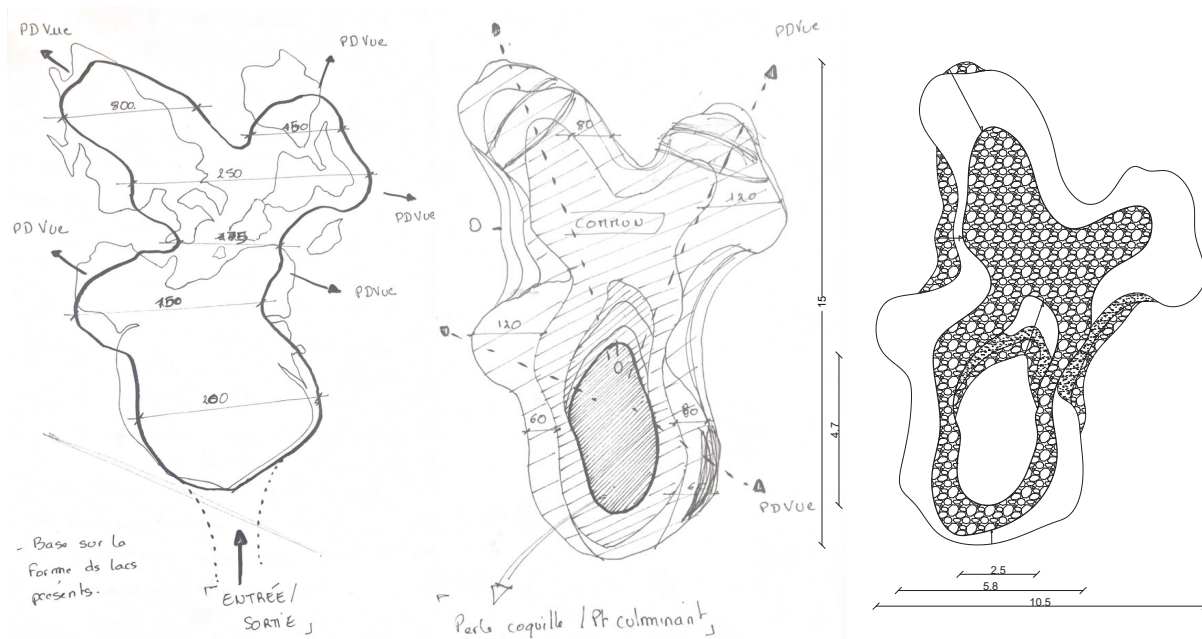
3D modeling
Idea Sharing
Material Experimentation





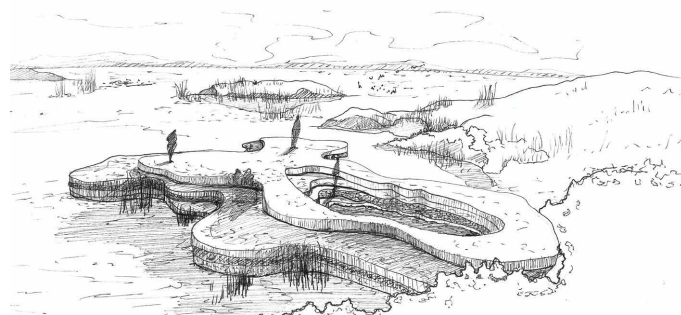
In the current situation, the relationship between Man and Nature is increasingly complex. Man takes without giving back, less and less exchanges are merged between these two entities. We want to renew the link between Man and Nature, to raise awareness of the field of possibilities that natural materials offer us. We have chosen a material that is created, lives and disappears thanks to nature.

The oyster shell is formed by the accumulation of limestone, it purifies the water. When it disappears, it is consumed by the fauna and flora. We are in the presence of a material that does not die because it is permanently reused by Nature. A dialogue and permanent evolution with its environment.



Ostréidae is a project carried out with these shells. With the participation of Man, the oyster shell can be proposed in the form of concrete, but also sound and decorative elements. Enter our observatory, come and discover nature through nature. An observatory on four thicknesses each composed of oysters in different forms. By coming to this observatory, users will experience the different sensations caused by the oyster: the relief, the softness, the light, the smell but also the sounds. By walking on the different plateaus, Man creates his own experience with the contact he will have with matter.

We offer a unique experience that awakens all your senses. An awakening caused by the user himself but also by the nature reserve that comes to dialogue and interact with the structure. A dialogue and permanent evolution with its environment. The oyster shell crumbles with contact, the wind and erodes with water. It will be shaped by the place. We offer you an observatory whose matter comes from Nature and the primary form of Man. However, life will be defined by Nature who will dig it and invade it to finally swallow it up. It will allow us to feed and thus give our structure a full role in its ecosystem, the time of its existence.



PINOSINE

NEW MATERIAL RESEARCH

Pine tree based biomaterial

Material

Organic Fiber
Oyster shell
Resine Organic
Biomass

Team

Neda Massoudifar

My Role

3D modeling
Idea
Material Experimentation





MATERIAL

chickpea flour with dried lemon gave me a rough texture after drying ?And I could mold it and make a mold of it .
i tried it in different shapes.



BRIEF

recyclable reusable material but not resistant enough to choc .

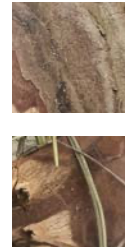


Harmony with nature is not a new modernity. The ideas behind biomimicry invite us to reread the long history of polymorphic relationships

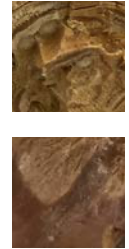
between humans, animals, plants, minerals, rocks, elements; animate and inanimate beings. Mimesis is only one step.



needles that go unused and found them to be a great alternative for all kinds of fibers.



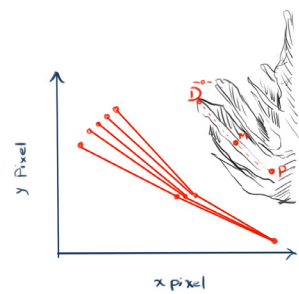
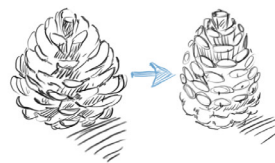
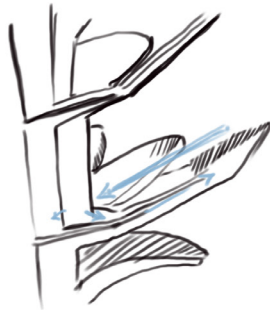
manufacturing techniques - crushing, soaking, steaming, carding, binding and pressing



Biocomposite Research

Biocomposites form part of a large family of biomaterials which can be derived from a variety of origins. It is a biobased polymer that is entirely or partially, or at least 20 percent, derived from renewable biomass, such as plant-based sources, recycled food or animal waste, and may or not be biodegradable.

In the case of this research, all ingredients used are plant-based. Therefore because of its biological origin, rather than petroleum origin, it is inherently biodegradable. Meaning it can easily be broken down in carbon dioxide, water, energy and biomass with the aid of microbes, making it carbon neutral.



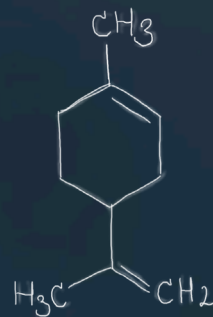


Pomme de pin

Ecorse

Les Epins de pin

PLUS DE 50% de la forêt française pourrait voir son faciès modifié d'ici **50 ans**.



- 12 milliards d'arbres
- 182 arbres par habitant
- 252 m² de forêt par habitant



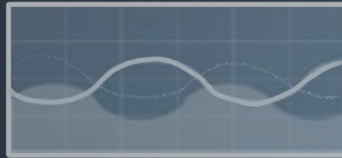
614 000 hectar
2200 m
200-500 ans



• **POMA** C'était ce projet qui m'a amène à réfléchir à mon matériaux

• **PINOZINE** matériaux biodégradables pour la production et dans la construction

• **EXTROPIN** est un nouvel outil, promouvant la fabrication Et l'utilisation de biomatériaux



L'homme

Le Design

La nature

pine de

Resine

ecorse d

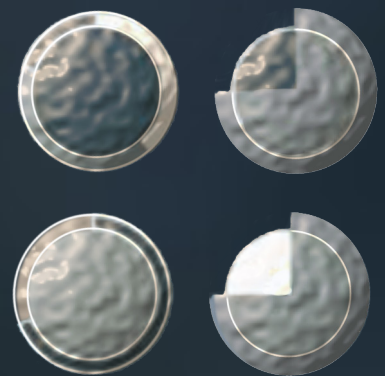
FLUIDITÉ

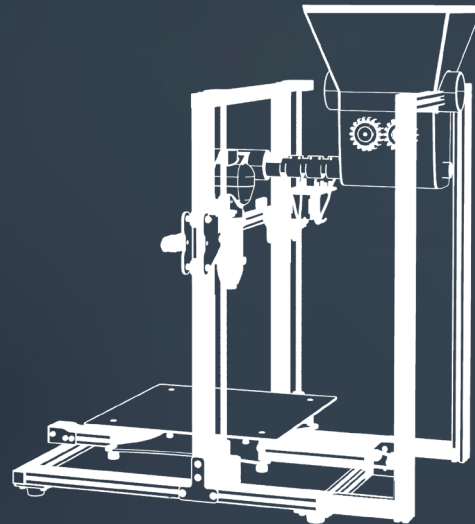
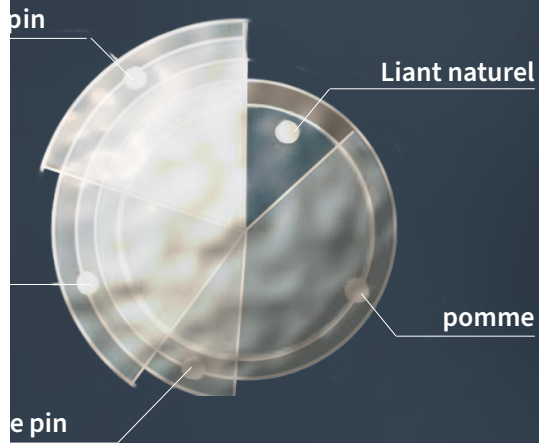
c'est une réflexion philosophique j'ai pris pour thème la fluidité car je voulais pensé au comportement cyclique au lieu de penser à la manière linéaire

L'étude com
formulations basées s
premières na
production de

• **POMA** C'était ce projet qui m'a amène à réfléchir à mon matériaux, La biomasse représente 8 % De la serre mondiale Émissions.

l'amélioration de la
composite biosour
biodégradable, cor
celles dérivées du





PINOZINE

pare différentes
ur des matières
naturelles pour la
biocomposites

EXTROPIN

minimise l'impact sur l'environnement.
Il offre un outil spécialisé Pour lutter
contre les déchets et réduire la mise
en décharge
Déchets, créant des objets
biodégradables utilisables.

performance
cé et/ou
me **alternative à**
pétrole.

- ALLONGEMENT DE LA DURÉE DE VIE DES PRODUITS
- RÉDUCTION DE L'OBSOLESCENCE PROGRAMMÉE
- RELOCALISATION DE L'ÉCONOMIE

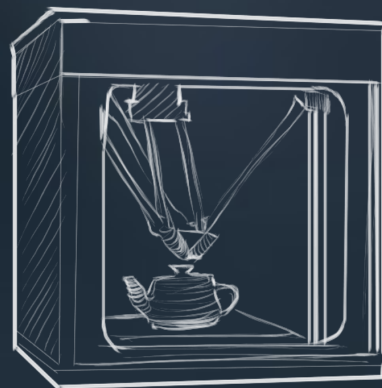
IMPRIMENTE 3D

•IMPRESSION 3D ET DESIGN DURABLE

Prototypage rapide-Fabrication rapide
-Fabrication bar couche-Impression 3D
-Fabrication digitale

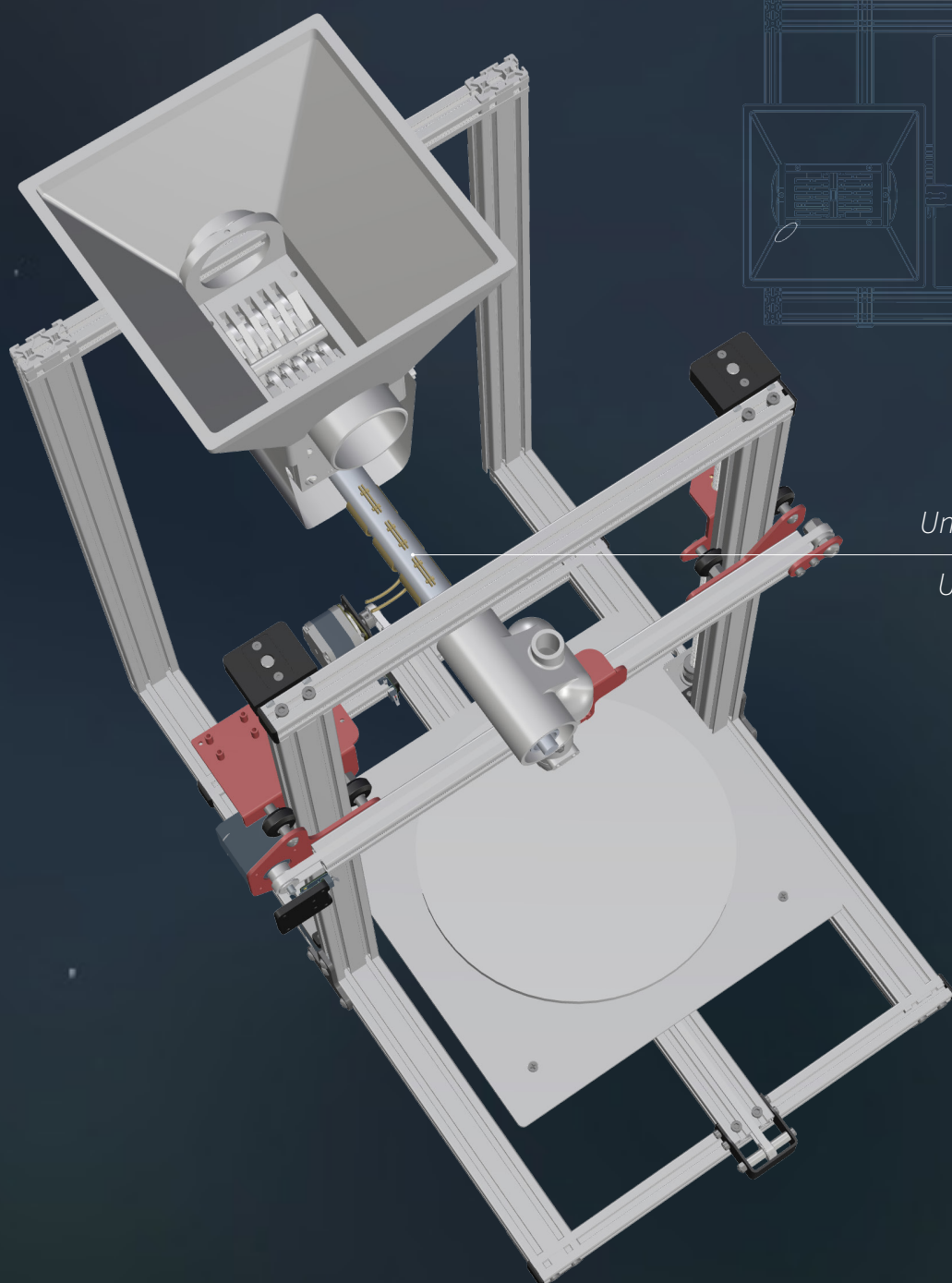
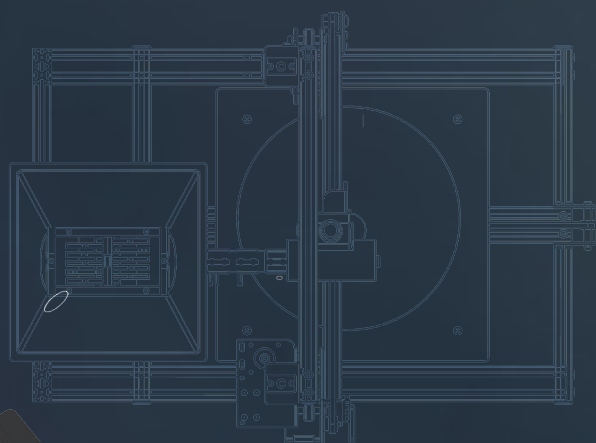
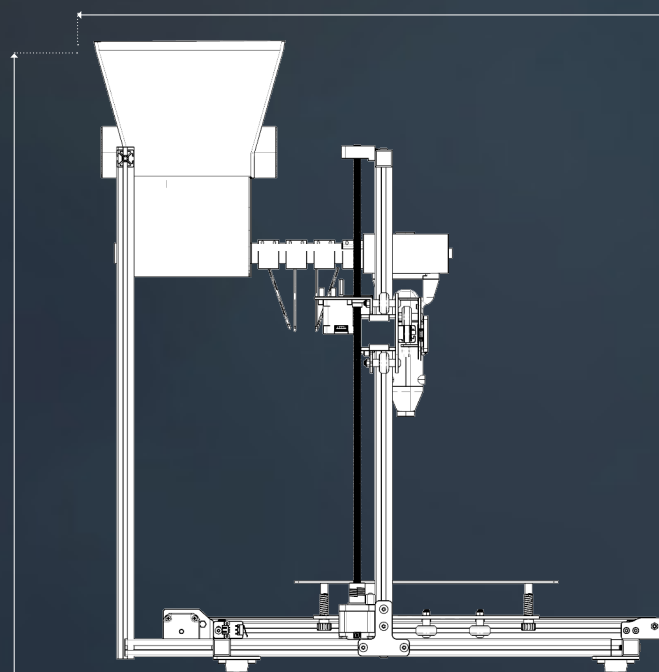
•PROCÉDÉS CLASSIQUES Mise en forme par enlèvement de matière=par soustraction

•FABRICATION ADDITIVE Fabrication de l'objet par dépôts successifs de matière, couche par couche = par addition



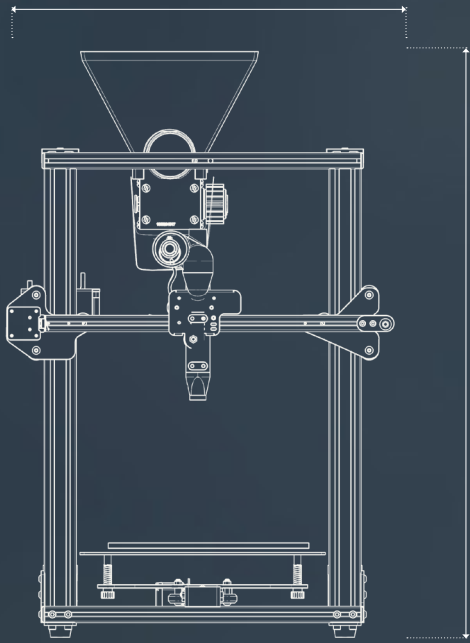
• EXTROPIN

est une machine extrusion , promouvant la fabrication Et l'utilisation de biomatériaux de manière personnelle. la gestion des déchets s'améliore au fur et à mesure que les gens Explorer de nouvelles possibilités de conception et d'utilisation Matériaux



Une vise sans fin extrudeuse

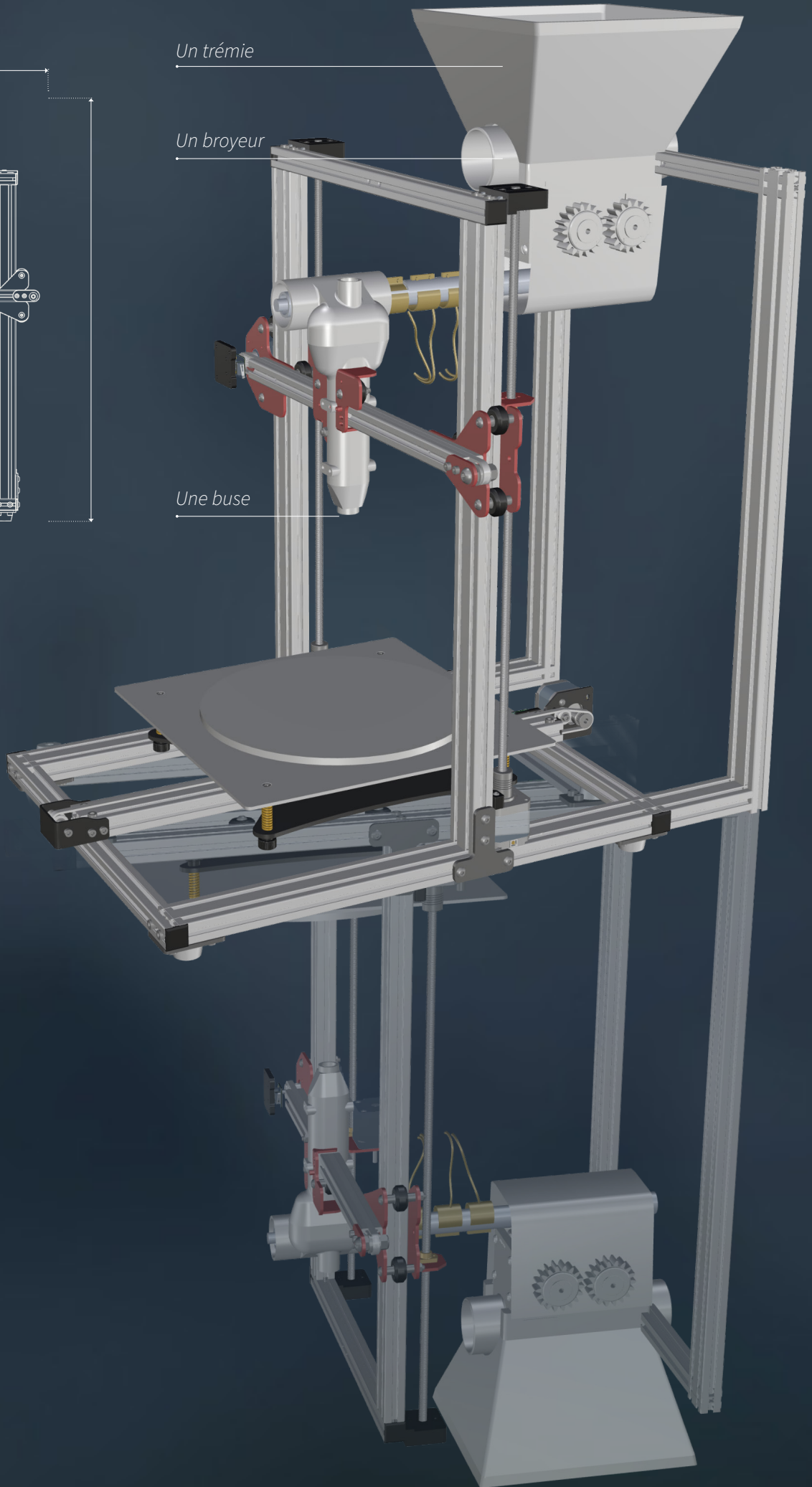
Une vis sans fin chauffante



Un trémie

Un broyeur

Une buse





Bio Based Ink

Graphic Reserch

Pine tree based biomaterial

Material

Organic Fiber
Resine Organic
Biomass

Team

Neda Massoudifar

My Role

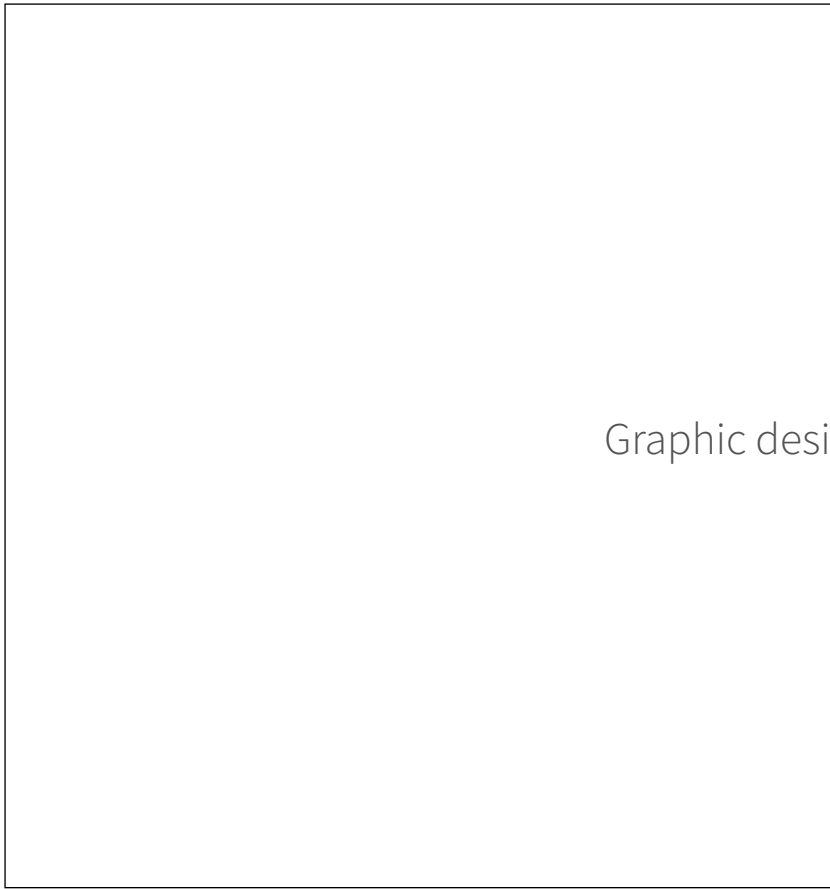
Idea
Material Experimentation

Pine for Your Inks Trees Provide Organic Alternatives to Water-Based Acrylics

The main raw materials used in water-based inks are pigment, water, vehicle and additives. raw materials from renewable resources are making inroads into water-based inks. The rosin derivatives from pine trees rosins. The main advantage of rosin-based inks versus conventional acrylic-based inks is that they are derived from renewable resources, and as such, they are green and sustainable. Consideration can be given to both of these new raw materials by ink makers.

Gum rosin is collected from live pine trees. Wood rosin comes from the dried stumps of pine trees. Tall oil rosin is obtained after distillation of crude tall oil from the black liquor of the Kraft paper making process. we can burn all the pine parts together in a bucket and collect the smoke the smoke is a very black powder which after mixing with water and some arabic gum could be a very nice black ink



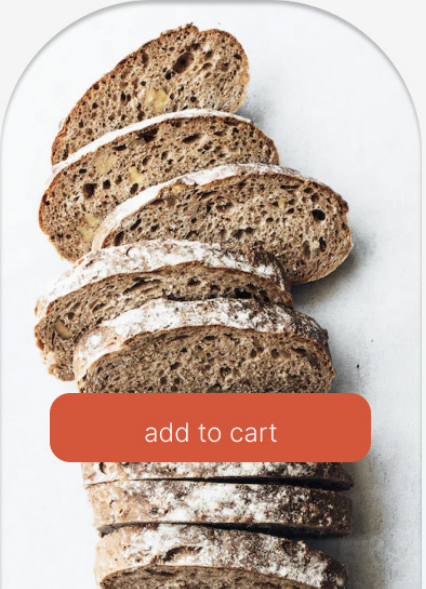


Graphic design Projects

☰


< Bakery Paradise >

wholewheat flour




add to cart


☰



the puff pastry




pain au chocolat
33 left ★ 4.6
1.99 \$/per piece
add to cart




chocolat Twist
13 left ★ 4.6
6.99 \$/per piece
add to cart

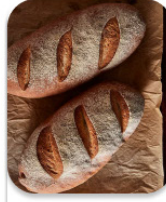
☰



the pastry



brotchen
33 left ★ 4.6
1.99 \$/per piece
add to cart

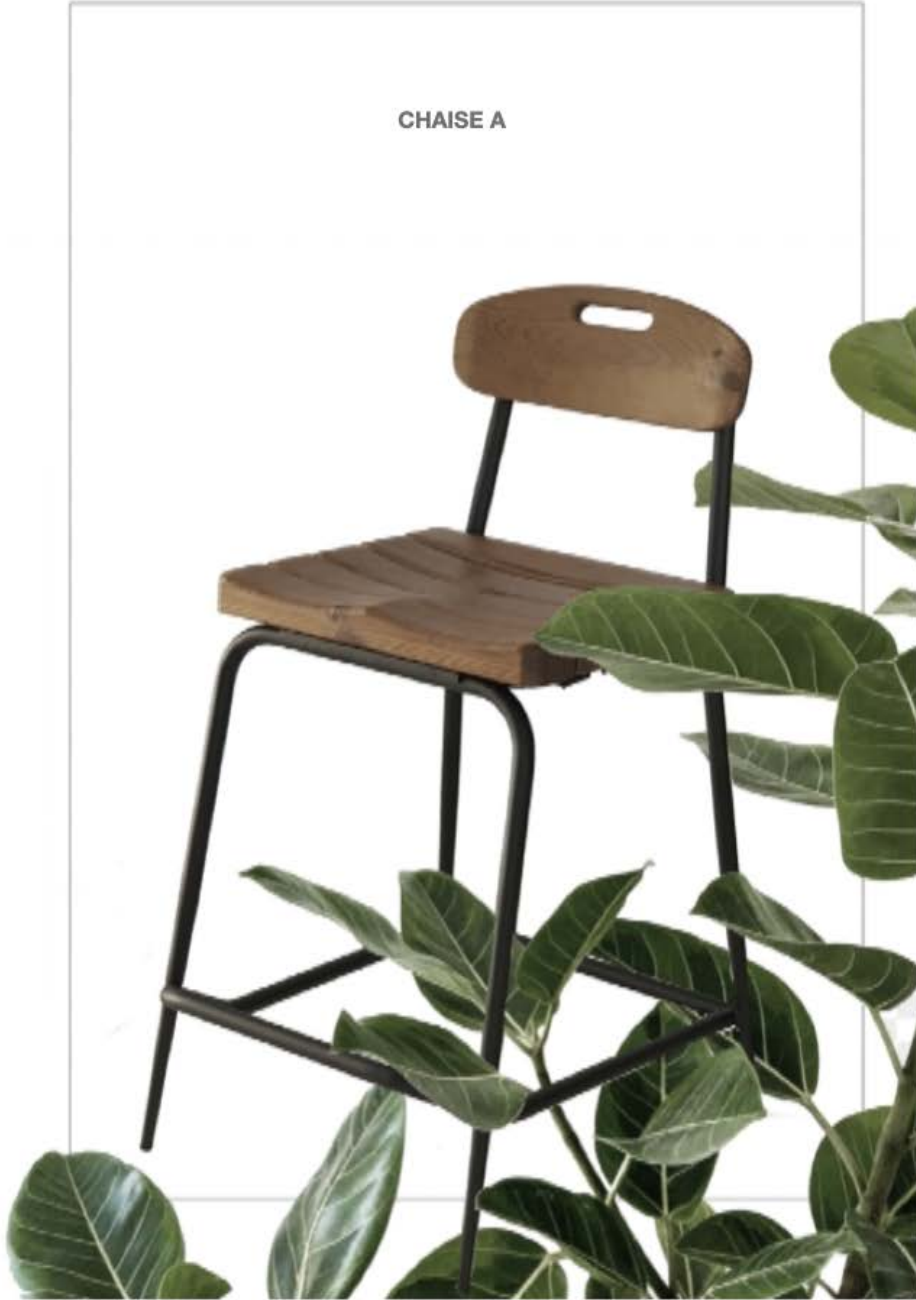


baguette
13 left ★ 4.6
6.99 \$/per piece
add to cart



NAHALSAN/PARAX

CHAISE A



A partir de
294 €

Elle se décline aujourd'hui dans de nombreux coloris et est disponible en acier ou acier inoxydable pour résister au temps et à la corrosion.



NASIM

Outdoor Chair

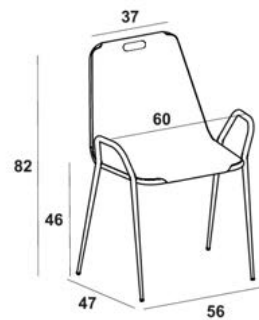
A chair with different raw materials. it could be used outside as well as inside

MATERIAL
Metal structure
wood

TEAM
Neda Massoudifar
Hamid Massoudifar
Nahalsan
MY WORK
sketches
renders
design



TYPE	PRO CODE	WEIGHT (kg)
	AF01A00121	6.5
	AF01A00111	4.1
	AF01A00131	5.6
	AF01A00171	5.5



99 PROMENADE DES ANGLAIS
06000 NICE
0033 605 961231
NEDA.MASSOUDIFAR@MAIL-EDC.COM

Neda Massoudifar

Neda Massoudifar

2005-2023